

HUMAN HPSE PROTEIN, HIS TAG

目录: 11503

产品名称: Human HPSE Protein

规格: 10 µg, 50 µg and 100 µg

基因符号: Heparanase;Hpa1;HEP;HPA;HPA1;HPRI;HPSE1;HSE1

Target: HPSE

UNIPROT ID: Q9Y251

描述: Recombinant human HPSE protein with C-terminal 6xHis tag

背景: Heparan sulfate proteoglycans are major components of the basement membrane and extracellular matrix. The protein encoded by this gene is an enzyme that cleaves heparan sulfate proteoglycans to permit cell movement through remodeling of the extracellular matrix. In addition, this cleavage can release bioactive molecules from the extracellular matrix. Several transcript variants encoding different isoforms have been found for this gene. [provided by RefSeq, Sep 2011]

Species/Host: HEK293

Molecular Weight: The protein has a predicted molecular mass of 58.4 kDa after removal of the signal peptide. The apparent molecular mass of HPSE-His is approximately 55-70 kDa due to glycosylation.

Molecular Characterization: HPSE(Gln36-Ile543) 6xHis tag

纯化: The purity of the protein is greater than 85% as determined by SDS-PAGE and Coomassie blue staining.

Formulation & Reconstitution: Lyophilized from nanodisc solubilization buffer (20 mM Tris-HCl, 150 mM NaCl, pH 8.0). Normally 5% – 8% trehalose is added as protectants before lyophilization.

储存和运输: Store at -20°C to -80°C for 12 months in lyophilized form. After reconstitution, if not intended for use within a month, aliquot and store at -80°C (Avoid repeated freezing and thawing). Lyophilized proteins are shipped at ambient temperature.

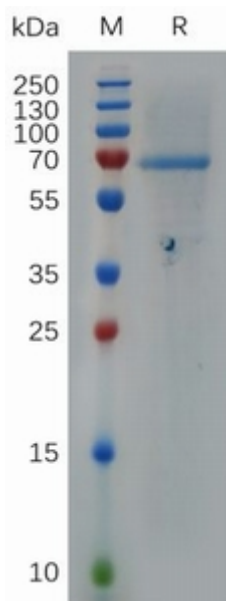


Figure 1. Human HPSE Protein, His Tag on SDS-PAGE under reducing condition.