

**HUMAN GLP1R PROTEIN, HFC TAG**

目录: 11926

产品名称: Human GLP1R Protein

规格: 10 µg, 50 µg and 100 µg

基因符号: GLP-1;GLP-1-R;GLP-1R

**Target:** GLP1R

**UNIPROT ID:** P43220

**描述:** Recombinant Human GLP1R Protein with C-terminal human Fc tag

**背景:** This gene encodes a 7-transmembrane protein that functions as a receptor for glucagon-like peptide 1 (GLP-1) hormone, which stimulates glucose-induced insulin secretion. This receptor, which functions at the cell surface, becomes internalized in response to GLP-1 and GLP-1 analogs, and it plays an important role in the signaling cascades leading to insulin secretion. It also displays neuroprotective effects in animal models. Polymorphisms in this gene are associated with diabetes. The protein is an important drug target for the treatment of type 2 diabetes and stroke. Alternative splicing of this gene results in multiple transcript variants. [provided by RefSeq, Apr 2016]

**Species/Host:** HEK293

**Molecular Weight:** The protein has a predicted molecular mass of 39.7 kDa after removal of the signal peptide. The apparent molecular mass of GLP1R-hFc is approximately 35-70 kDa due to glycosylation.

**Molecular Characterization:** GLP1R(Arg24-Glu139) hFc(Glu99-Ala330)

**纯化:** The purity of the protein is greater than 95% as determined by SDS-PAGE and Coomassie blue staining.

**Formulation & Reconstitution:** Lyophilized from nanodisc solubilization buffer (20 mM Tris-HCl, 150 mM NaCl, pH 8.0). Normally 5% – 8% trehalose is added as protectants before lyophilization.

**储存和运输:** Store at -20°C to -80°C for 12 months in lyophilized form. After reconstitution, if not intended for use within a month, aliquot and store at -80°C (Avoid repeated freezing and thawing). Lyophilized proteins are shipped at ambient temperature.

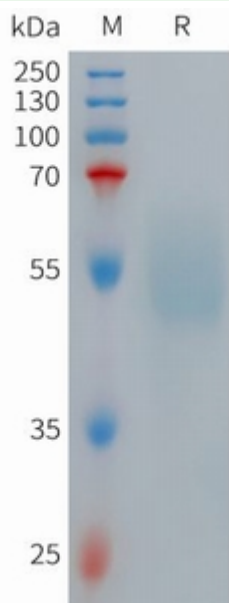


Figure 1. Human GLP1R Protein, hFc Tag on SDS-PAGE under reducing condition.