

HUMAN EPHA5 PROTEIN, HIS TAG**Cat.#:** 11411**Product Name:** Human EPHA5 Protein**Size:** 10 µg, 50 µg and 100 µg**Synonyms:** CEK7;EHK-1;EHK1;EK7;HEK7;TYRO4**Target:** EPHA5**UNIPROT ID:** P54756**Description:** Recombinant human EPHA5 protein with C-terminal 6xHis tag**Background:** This gene belongs to the ephrin receptor subfamily of the protein-tyrosine kinase family. EPH and EPH-related receptors have been implicated in mediating developmental events, particularly in the nervous system. Receptors in the EPH subfamily typically have a single kinase domain and an extracellular region containing a Cys-rich domain and 2 fibronectin type III repeats. The ephrin receptors are divided into 2 groups based on the similarity of their extracellular domain sequences and their affinities for binding ephrin-A and ephrin-B ligands. Alternatively spliced transcript variants encoding different isoforms have been described.

[provided by RefSeq, Aug 2013]

Species/Host: HEK293**Molecular Weight:** The protein has a predicted molecular mass of 61.6 kDa after removal of the signal peptide. The apparent molecular mass of EPHA5-His is approximately 70-100 kDa due to glycosylation.**Molecular Characterization:** EPHA5(Pro25-Pro573) 6xHis tag**Purity:** The purity of the protein is greater than 95% as determined by SDS-PAGE and Coomassie blue staining.**Formulation & Reconstitution:** Lyophilized from nanodisc solubilization buffer (20 mM Tris-HCl, 150 mM NaCl, pH 8.0). Normally 5% – 8% trehalose is added as protectants before lyophilization.**Storage & Shipping:** Store at -20°C to -80°C for 12 months in lyophilized form. After reconstitution, if not intended for use within a month, aliquot and store at -80°C (Avoid repeated freezing and thawing). Lyophilized proteins are shipped at ambient temperature.

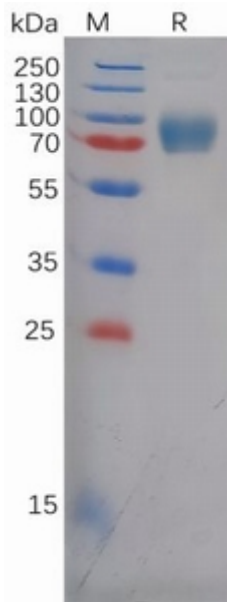


Figure 1. Human EPHA5 Protein, His Tag on SDS-PAGE under reducing condition.