

HUMAN EPHA2 PROTEIN, HIS TAG

目录: 11249

产品名称: Human EPHA2 Protein

规格: 10 µg, 50 µg and 100 µg

基因符号: ARCC2;CTPA;CTPPI;CTRCT6;ECK

Target: EPHA2

UNIPROT ID: P29317

描述: Recombinant Human EPHA2 Protein with C-terminal 6xHis tag

背景: This gene belongs to the ephrin receptor subfamily of the protein-tyrosine kinase family. EPH and EPH-related receptors have been implicated in mediating developmental events, particularly in the nervous system. Receptors in the EPH subfamily typically have a single kinase domain and an extracellular region containing a Cys-rich domain and 2 fibronectin type III repeats. The ephrin receptors are divided into 2 groups based on the similarity of their extracellular domain sequences and their affinities for binding ephrin-A and ephrin-B ligands. This gene encodes a protein that binds ephrin-A ligands. Mutations in this gene are the cause of certain genetically-related cataract disorders.[provided by RefSeq, May 2010]

Species/Host: HEK293

Molecular Weight: The protein has a predicted molecular mass of 57.0 kDa after removal of the signal peptide. The apparent molecular mass of EPHA2-His is approximately 55-70 kDa due to glycosylation.

Molecular Characterization: EPHA2 (Ala24-Asn534) 6×His tag

纯化: The purity of the protein is greater than 95% as determined by SDS-PAGE and Coomassie blue staining.

Formulation & Reconstitution: Lyophilized from nanodisc solubilization buffer (20 mM Tris-HCl, 150 mM NaCl, pH 8.0). Normally 5% – 8% trehalose is added as protectants before lyophilization.

储存和运输: Store at -20°C to -80°C for 12 months in lyophilized form. After reconstitution, if not intended for use within a month, aliquot and store at -80°C (Avoid repeated freezing and thawing). Lyophilized proteins are shipped at ambient temperature.

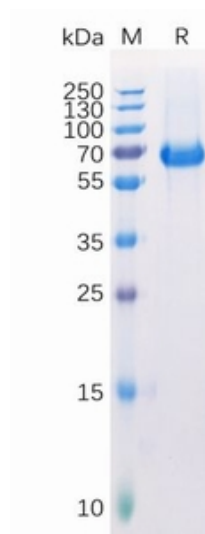


Figure 1. Human EPHA2 Protein, His Tag on SDS-PAGE under reducing condition.

Human EPHA2, His tagged protein ELISA

0.1 μ g of Human EPHA2, His tagged protein per well

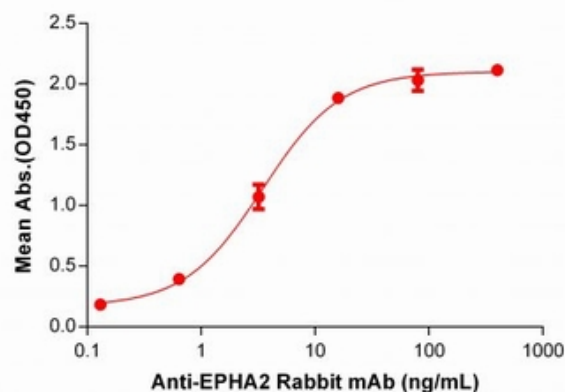


Figure 2. ELISA plate pre-coated by 1 μ g/ml (100 μ l/well) Human EPHA2 protein, His Tag (11249) can bind EPHA2 Rabbit mAb in a linear range of 0.128-16 ng/mL.