

## HUMAN EPCAM PROTEIN, HIS TAG

**Cat.#:** 11191

**Product Name:** Human EPCAM Protein

**Size:** 10 µg, 50 µg and 100 µg

**Synonyms:** EPCAM;ACSTD1;ROPI;D326;IAR5;GP2;GP314;GP40;SA;A733-2;NPCC8;NPCC-8;S1/4;SA;4S1;IC18;KI

**Target:** EPCAM

**UNIPROT ID:** P16422

**Description:** Recombinant human EPCAM protein with C-terminal 6xHis tag

**Background:** This gene encodes a carcinoma-associated antigen and is a member of a family that includes at least two type I membrane proteins. This antigen is expressed on most normal epithelial cells and gastrointestinal carcinomas and functions as a homotypic calcium-independent cell adhesion molecule. The antigen is being used as a target for immunotherapy treatment of human carcinomas. Mutations in this gene result in congenital tufting enteropathy.

**Species/Host:** HEK293

**Molecular Weight:** The protein has a predicted molecular mass of 28.2 kDa after removal of the signal peptide.

**Molecular Characterization:** EPCAM(Gln24-Lys265) 6×His tag

**Purity:** The purity of the protein is greater than 95% as determined by SDS-PAGE and Coomassie blue staining.

**Formulation & Reconstitution:** Lyophilized from nanodisc solubilization buffer (20 mM Tris-HCl, 150 mM NaCl, pH 8.0). Normally 5% – 8% trehalose is added as protectants before lyophilization.

**Storage & Shipping:** Store at -20°C to -80°C for 12 months in lyophilized form. After reconstitution, if not intended for use within a month, aliquot and store at -80°C (Avoid repeated freezing and thawing). Lyophilized proteins are shipped at ambient temperature.

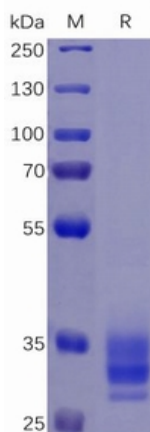


Figure 1. Human EPCAM Protein, His Tag on SDS-PAGE under reducing condition.

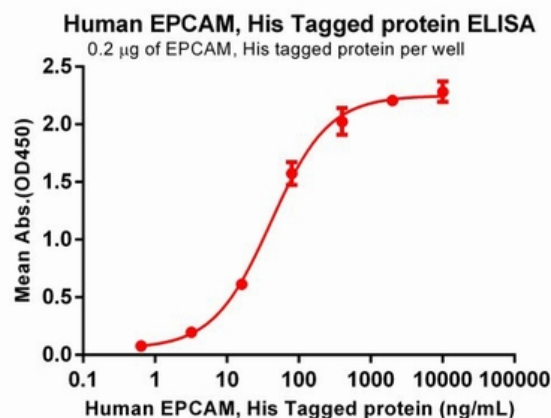


Figure 2. ELISA plate pre-coated by 2 µg/ml (100 µl/well) Human EPCAM Protein, His Tag (11191) can bind Anti-EPCAM antibody(DM147), Rabbit mAb in a linear range of 3.20-16 ng/mL.