

**HUMAN CS1 PROTEIN, HFC-HIS TAG**

目录: 11130

产品名称: Human CS1 Protein

规格: 10 µg, 50 µg and 100 µg

基因符号: SLAMF7;CD319;CS1;CRACC;19A;FOAP-12

**Target:** CS1

**UNIPROT ID:** Q9NQ25

**描述:** Recombinant human CS1 protein with C-terminal human Fc and 6xHis tag

**背景:** SLAM family member 7 (SLAMF7) is also known as CD2-like receptor-activating cytotoxic cells (CRACC), Membrane protein FOAP-12, CD antigen CD319, Novel Ly9, Protein 19A, which is a single-pass type I membrane protein and a member of the CD2 family of cell surface receptors. SLAMF7 is expressed in spleen, lymph node, peripheral blood leukocytes, bone marrow, small intestine, stomach, appendix, lung and trachea. Isoform 1 of SLAMF7 mediates NK cell activation through a SH2D1A-independent extracellular signal-regulated ERK-mediated pathway. May play a role in lymphocyte adhesion. Isoform 3 of SLAMF7 does not mediate any NK cell activation.

**Species/Host:** HEK293

**Molecular Weight:** The protein has a predicted molecular mass of 70 kDa after removal of the signal peptide.

**Molecular Characterization:** CS1(Ser23-Met226) hFc(Glu99-Ala330) 6×His tag

**纯化:** The purity of the protein is greater than 95% as determined by SDS-PAGE and Coomassie blue staining.

**Formulation & Reconstitution:** Lyophilized from nanodisc solubilization buffer (20 mM Tris-HCl, 150 mM NaCl, pH 8.0). Normally 5% – 8% trehalose is added as protectants before lyophilization.

**储存和运输:** Store at -20°C to -80°C for 12 months in lyophilized form. After reconstitution, if not intended for use within a month, aliquot and store at -80°C (Avoid repeated freezing and thawing). Lyophilized proteins are shipped at ambient temperature.

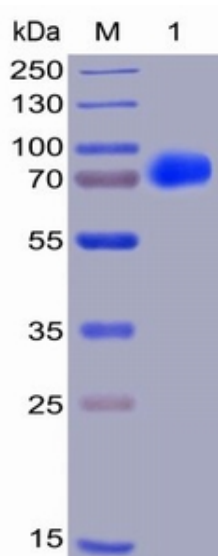


Figure 1. Human CS1, hFc-His Tag on SDS-PAGE under reducing condition.

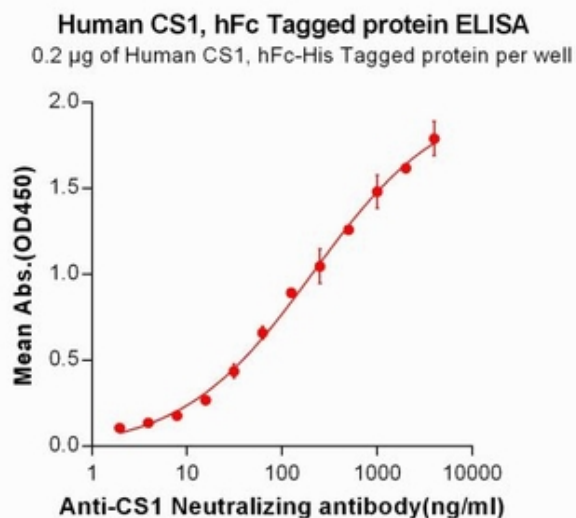


Figure 2. ELISA plate pre-coated by 2 µg/ml (100 µl/well) Human CS1, hFc-His tagged protein (11130) can bind CS1 Neutralizing antibody 28011 in a linear range of 7.81-210.7 ng/ml.