

HUMAN CLEC5A PROTEIN, HFC TAG

目录: 11969

产品名称: Human CLEC5A Protein

规格: 10 µg, 50 µg and 100 µg

基因符号: CLECSF5;MDL-1;MDL1

Target: CLEC5A

UNIPROT ID: Q9NY25

描述: Recombinant Human CLEC5A Protein with N-terminal human Fc tag

背景: This gene encodes a member of the C-type lectin/C-type lectin-like domain (CTL/CTLD) superfamily. Members of this family share a common protein fold and have diverse functions, such as cell adhesion, cell-cell signalling, glycoprotein turnover, and roles in inflammation and immune response. The encoded type II transmembrane protein interacts with dnax-activation protein 12 and may play a role in cell activation. Alternative splice variants have been described but their full-length sequence has not been determined. [provided by RefSeq, Jul 2008]

Species/Host: HEK293

Molecular Weight: The protein has a predicted molecular mass of 44.5 kDa after removal of the signal peptide. The apparent molecular mass of hFc-CLEC5A is approximately 55-70 kDa due to glycosylation.

Molecular Characterization: hFc(Glu99-Ala330) CLEC5A(Pro28-Lys188)

纯化:: The purity of the protein is greater than 95% as determined by SDS-PAGE and Coomassie blue staining.

Formulation & Reconstitution: Lyophilized from nanodisc solubilization buffer (20 mM Tris-HCl, 150 mM NaCl, pH 8.0). Normally 5% – 8% trehalose is added as protectants before lyophilization.

储存和运输: Store at -20°C to -80°C for 12 months in lyophilized form. After reconstitution, if not intended for use within a month, aliquot and store at -80°C (Avoid repeated freezing and thawing). Lyophilized proteins are shipped at ambient temperature.

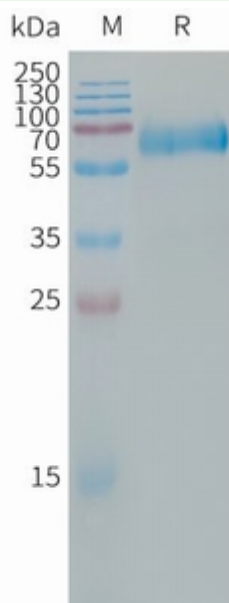


Figure 1. Human CLEC5A Protein, hFc Tag on SDS-PAGE under reducing condition.