

HUMAN CLEC2D PROTEIN, HIS TAG

目录: 11529

产品名称: Human CLEC2D Protein

规格: 10 µg, 50 µg and 100 µg

基因符号: C-type lectin domain family 2 member D;ectin-like NK cell receptor;LT-1;steoclast inhibitory lectin

Target: CLEC2D

UNIPROT ID: Q9UHP7

描述: Recombinant human CLEC2D protein with C-terminal 6xHis tag

背景: This gene encodes a member of the natural killer cell receptor C-type lectin family. The encoded protein inhibits osteoclast formation and contains a transmembrane domain near the N-terminus as well as the C-type lectin-like extracellular domain. Several alternatively spliced transcript variants have been identified for this gene. [provided by RefSeq, Oct 2010]

Species/Host: HEK293

Molecular Weight: The protein has a predicted molecular mass of 16.2 kDa after removal of the signal peptide. The apparent molecular mass of CLEC2D-His is approximately 15–25 kDa due to glycosylation.

Molecular Characterization: CLEC2D(Arg60–Val191) 6×His tag

纯化: The purity of the protein is greater than 85% as determined by SDS-PAGE and Coomassie blue staining.

Formulation & Reconstitution: Lyophilized from nanodisc solubilization buffer (20 mM Tris-HCl, 150 mM NaCl, pH 8.0). Normally 5% – 8% trehalose is added as protectants before lyophilization.

储存和运输: Store at –20°C to –80°C for 12 months in lyophilized form. After reconstitution, if not intended for use within a month, aliquot and store at –80°C (Avoid repeated freezing and thawing). Lyophilized proteins are shipped at ambient temperature.

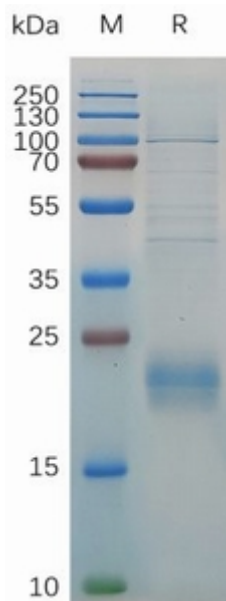


Figure 1. Human CLEC2D Protein, His Tag on SDS-PAGE under reducing condition.