

**HUMAN CLEC1B PROTEIN, HIS TAG****Cat.#:** 11863**Product Name:** Human CLEC1B Protein**Size:** 10 µg, 50 µg and 100 µg**Synonyms:** CLEC2;CLEC2B;PRO1384;QDED721**Target:** CLEC1B**UNIPROT ID:** Q9P126**Description:** Recombinant Human CLEC1B Protein with N-terminal 6xHis tag**Background:** Natural killer (NK) cells express multiple calcium-dependent (C-type) lectin-like receptors, such as CD94 (KLRD1; MIM 602894) and NKG2D (KLRC4; MIM 602893), that interact with major histocompatibility complex class I molecules and either inhibit or activate cytotoxicity and cytokine secretion. CLEC2 is a C-type lectin-like receptor expressed in myeloid cells and NK cells (Colonna et al., 2000 [PubMed 10671229]).[supplied by OMIM, Jan 2011]**Species/Host:** HEK293**Molecular Weight:** The protein has a predicted molecular mass of 21.5 kDa after removal of the signal peptide. The apparent molecular mass of His-CLEC1B is approximately 25–35 kDa due to glycosylation.**Molecular Characterization:** 6×His tag CLEC1B(Ser55–Pro229)**Purity:** The purity of the protein is greater than 85% as determined by SDS-PAGE and Coomassie blue staining.**Formulation & Reconstitution:** Lyophilized from nanodisc solubilization buffer (20 mM Tris-HCl, 150 mM NaCl, pH 8.0). Normally 5% – 8% trehalose is added as protectants before lyophilization.**Storage & Shipping:** Store at -20°C to -80°C for 12 months in lyophilized form. After reconstitution, if not intended for use within a month, aliquot and store at -80°C (Avoid repeated freezing and thawing). Lyophilized proteins are shipped at ambient temperature.

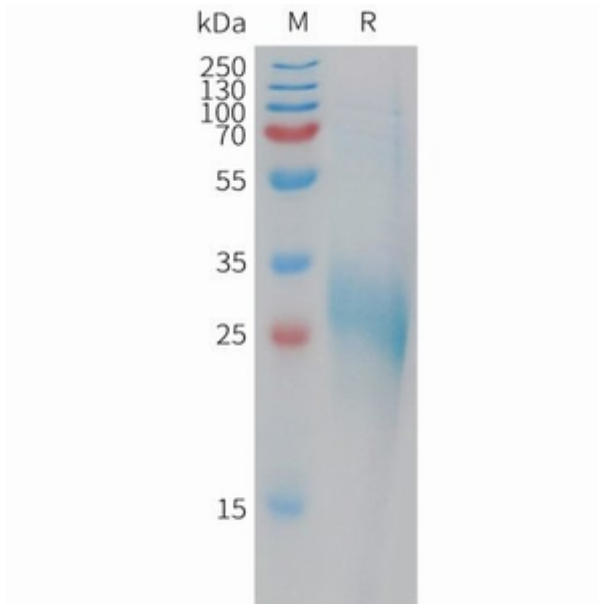


Figure 1. Human CLEC1B Protein, His Tag on SDS-PAGE under reducing condition.