

HUMAN CLEC12A PROTEIN, HIS TAG

Cat.#: 11215

Product Name: Human CLEC12A Protein

Size: 10 µg, 50 µg and 100 µg

Synonyms: CLEC12A;ICL;LL-1;LL1;CAL2;CAL-2;D371

Target: CLEC12A

UNIPROT ID: Q5QGZ9

Description: Recombinant human CLEC12A Protein with C-terminal 6xHis tag

Background: This gene encodes a member of the C-type lectin/C-type lectin-like domain (CTL/CTLD) superfamily. Members of this family share a common protein fold and have diverse functions, such as cell adhesion, cell-cell signaling, glycoprotein turnover, and roles in inflammation and immune response. The protein encoded by this gene is a negative regulator of granulocyte and monocyte function. Several alternatively spliced transcript variants of this gene have been described, but the full-length nature of some of these variants has not been determined. This gene is closely linked to other CTL/CTLD superfamily members in the natural killer gene complex region on chromosome 12p13.

Species/Host: HEK293

Molecular Weight: The protein has a predicted molecular mass of 24.6 kDa after removal of the signal peptide. The apparent molecular mass of CLEC12A-His is approximately 35-55 kDa due to glycosylation.

Molecular Characterization: CLEC12A(His65-Ala265) 6×His tag

Purity: The purity of the protein is greater than 95% as determined by SDS-PAGE and Coomassie blue staining.

Formulation & Reconstitution: Lyophilized from nanodisc solubilization buffer (20 mM Tris-HCl, 150 mM NaCl, pH 8.0). Normally 5% – 8% trehalose is added as protectants before lyophilization.

Storage & Shipping: Store at -20°C to -80°C for 12 months in lyophilized form. After reconstitution, if not intended for use within a month, aliquot and store at -80°C (Avoid repeated freezing and thawing). Lyophilized proteins are shipped at ambient temperature.

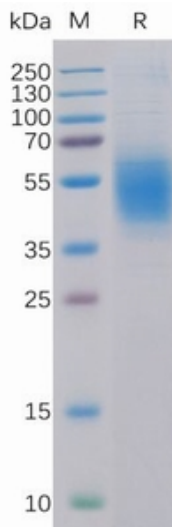


Figure 1. Human CLEC12A Protein, His Tag on SDS-PAGE under reducing condition.

Human CLEC12A, His Tagged protein ELISA

0.2 μ g of Human CLEC12A, His tagged protein per well

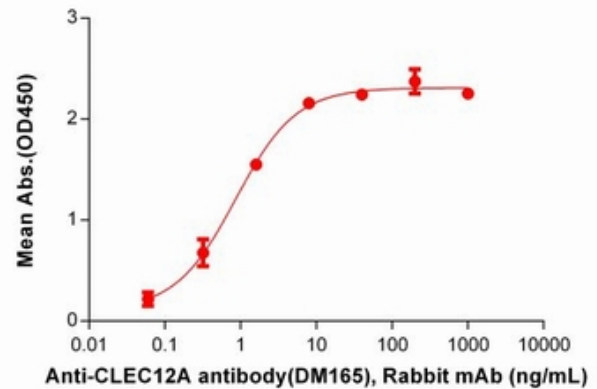


Figure 2. ELISA plate pre-coated by 2 μ g/ml (100 μ l/well) Human CLEC12A Protein, His Tag (11215) can bind Anti-CLEC12A antibody (DM165), Rabbit mAb in a linear range of 0.32–1.60 ng/mL.