

## HUMAN CHODL PROTEIN, HFC TAG

**Cat.#:** 11405

**Product Name:** Human CHODL Protein

**Size:** 10 µg, 50 µg and 100 µg

**Synonyms:** C21orf68;MT75;PRED12

**Target:** CHODL

**UNIPROT ID:** Q9H9P2

**Description:** Recombinant Human CHODL with C-terminal human Fc tag

**Background:** This gene encodes a type I membrane protein with a carbohydrate recognition domain characteristic of C-type lectins in its extracellular portion. In other proteins, this domain is involved in endocytosis of glycoproteins and exogenous sugar-bearing pathogens. This protein localizes predominantly to the perinuclear region. Several transcript variants encoding a few different isoforms have been found for this gene. [provided by RefSeq, Feb 2011]

**Species/Host:** HEK293

**Molecular Weight:** The protein has a predicted molecular mass of 48.1 kDa after removal of the signal peptide. The apparent molecular mass of CHODL-hFc is approximately 70-100 kDa due to glycosylation.

**Molecular Characterization:** CHODL(Arg22-Asn216) hFc(Glu99-Ala330)

**Purity:** The purity of the protein is greater than 95% as determined by SDS-PAGE and Coomassie blue staining.

**Formulation & Reconstitution:** Lyophilized from nanodisc solubilization buffer (20 mM Tris-HCl, 150 mM NaCl, pH 8.0). Normally 5% – 8% trehalose is added as protectants before lyophilization.

**Storage & Shipping:** Store at -20°C to -80°C for 12 months in lyophilized form. After reconstitution, if not intended for use within a month, aliquot and store at -80°C (Avoid repeated freezing and thawing). Lyophilized proteins are shipped at ambient temperature.

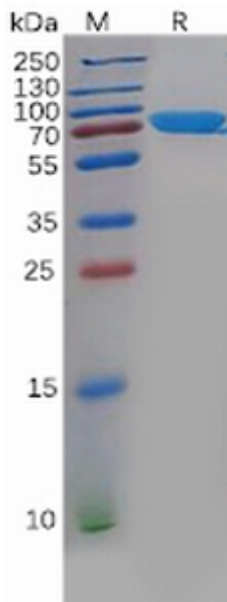


Figure 1. Human CHODL Protein, hFc Tag on SDS-PAGE under reducing condition.