

## HUMAN CDH6 PROTEIN, HIS TAG

目录: 11779

产品名称: Human CDH6 Protein

规格: 10 µg, 50 µg and 100 µg

基因符号: CDH6;K-cadherin

**Target:** CDH6

**UNIPROT ID:** P55285

**描述:** Recombinant human CDH6 protein with C-terminal 6xHis tag

**背景:** This gene encodes a member of the cadherin superfamily. Cadherins are membrane glycoproteins that mediate homophilic cell-cell adhesion and play critical roles in cell differentiation and morphogenesis. The encoded protein is a type II cadherin and may play a role in kidney development as well as endometrium and placenta formation. Decreased expression of this gene may be associated with tumor growth and metastasis. [provided by RefSeq, May 2011]

**Species/Host:** HEK293

**Molecular Weight:** The protein has a predicted molecular mass of 67.2 kDa after removal of the signal peptide. The apparent molecular mass of CDH6-His is approximately 70-130 kDa due to glycosylation.

**Molecular Characterization:** CDH6(Thr19-Ala615) 6×His tag

**纯化:** The purity of the protein is greater than 85% as determined by SDS-PAGE and Coomassie blue staining.

**Formulation & Reconstitution:** Lyophilized from nanodisc solubilization buffer (20 mM Tris-HCl, 150 mM NaCl, pH 8.0). Normally 5% – 8% trehalose is added as protectants before lyophilization.

**储存和运输:** Store at -20°C to -80°C for 12 months in lyophilized form. After reconstitution, if not intended for use within a month, aliquot and store at -80°C (Avoid repeated freezing and thawing). Lyophilized proteins are shipped at ambient temperature.

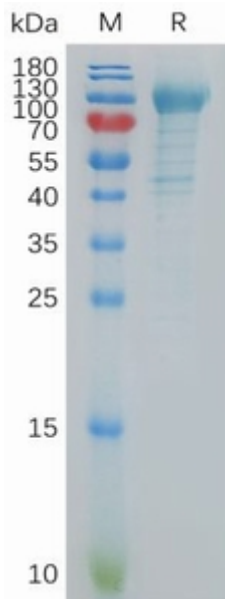


Figure 1. Human CADH6 Protein, His Tag on SDS-PAGE under reducing condition.