

## HUMAN CD46 PROTEIN, HIS TAG

**Cat.#:** 11220

**Product Name:** Human CD46 Protein

**Size:** 10 µg, 50 µg and 100 µg

**Synonyms:** CD46;HUS2;CP;IC10;LX;RA2.10

**Target:** CD46

**UNIPROT ID:** P15529

**Description:** Recombinant human CD46 Protein with C-terminal 6xHis tag

**Background:** The protein encoded by this gene is a type I membrane protein and is a regulatory part of the complement system. The encoded protein has cofactor activity for inactivation of complement components C3b and C4b by serum factor I, which protects the host cell from damage by complement. In addition, the encoded protein can act as a receptor for the Edmonston strain of measles virus, human herpesvirus-6, and type IV pili of pathogenic *Neisseria*. Finally, the protein encoded by this gene may be involved in the fusion of the spermatozoa with the oocyte during fertilization. Mutations at this locus have been associated with susceptibility to hemolytic uremic syndrome. Alternatively spliced transcript variants encoding different isoforms have been described.

**Species/Host:** HEK293

**Molecular Weight:** The protein has a predicted molecular mass of 33.5 kDa after removal of the signal peptide. The apparent molecular mass of CD46-His is approximately 55-70 kDa due to glycosylation.

**Molecular Characterization:** CD46(Cys35-Asp328) 6xHis tag

**Purity:** The purity of the protein is greater than 95% as determined by SDS-PAGE and Coomassie blue staining.

**Formulation & Reconstitution:** Lyophilized from nanodisc solubilization buffer (20 mM Tris-HCl, 150 mM NaCl, pH 8.0). Normally 5% – 8% trehalose is added as protectants before lyophilization.

**Storage & Shipping:** Store at -20°C to -80°C for 12 months in lyophilized form. After reconstitution, if not intended for use within a month, aliquot and store at -80°C (Avoid repeated freezing and thawing). Lyophilized proteins are shipped at ambient temperature.

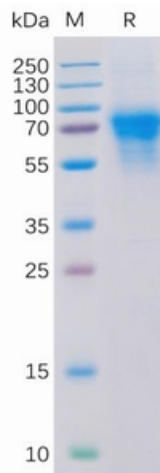


Figure 1. Human CD46 Protein, His Tag on SDS-PAGE under reducing condition.

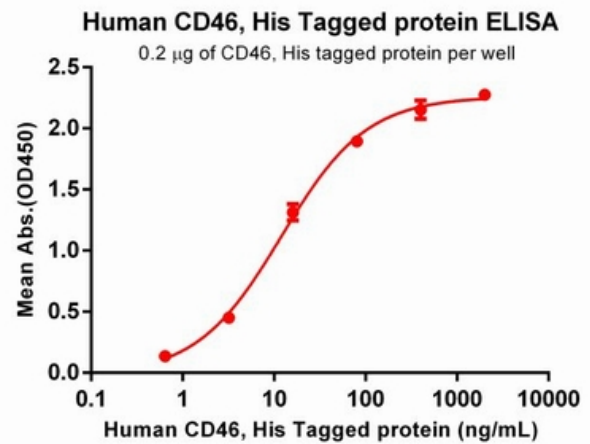


Figure 2. ELISA plate pre-coated by 2 µg/ml (100 µl/well) Human CD46 Protein, His Tag (11220) can bind Anti-CD46 antibody(DM145), Rabbit mAb in a linear range of 0.64-16 ng/mL.