

## HUMAN CD2 PROTEIN, HFC TAG

**Cat.#:** 11392

**Product Name:** Human CD2 Protein

**Size:** 10 µg, 50 µg and 100 µg

**Synonyms:** LFA-2;SRBC;T11

**Target:** CD2

**UNIPROT ID:** P06729

**Description:** Recombinant Human CD2 Protein with C-terminal human Fc tag

**Background:** The protein encoded by this gene is a surface antigen found on all peripheral blood T-cells. The encoded protein interacts with LFA3 (CD58) on antigen presenting cells to optimize immune recognition. A locus control region (LCR) has been found in the 3' flanking sequence of this gene. [provided by RefSeq, Jun 2016]

**Species/Host:** HEK293

**Molecular Weight:** The protein has a predicted molecular mass of 47.4 kDa after removal of the signal peptide. The apparent molecular mass of CD2-hFc is approximately 55-70 kDa due to glycosylation.

**Molecular Characterization:** CD2(Lys25-Asp209) hFc(Glu99-Ala330)

**Purity:** The purity of the protein is greater than 90% as determined by SDS-PAGE and Coomassie blue staining.

**Formulation & Reconstitution:** Lyophilized from nanodisc solubilization buffer (20 mM Tris-HCl, 150 mM NaCl, pH 8.0). Normally 5% - 8% trehalose is added as protectants before lyophilization.

**Storage & Shipping:** Store at -20°C to -80°C for 12 months in lyophilized form. After reconstitution, if not intended for use within a month, aliquot and store at -80°C (Avoid repeated freezing and thawing). Lyophilized proteins are shipped at ambient temperature.

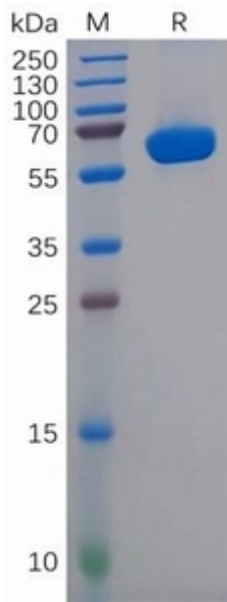


Figure 1. Human CD2 Protein, His Tag on SDS-PAGE under reducing condition.