

HUMAN CD160 PROTEIN, HIS TAG

目录: 11319

产品名称: Human CD160 Protein

规格: 10 µg, 50 µg and 100 µg

基因符号: BY55;NK1;NK28

Target: CD160

UNIPROT ID: O95971

描述: Recombinant human CD160 protein with C-terminal 6xHis tag

背景: CD160 is an 27 kDa glycoprotein which was initially identified with the monoclonal antibody BY55. Its expression is tightly associated with peripheral blood NK cells and CD8 T lymphocytes with cytolytic effector activity. The cDNA sequence of CD160 predicts a cysteine-rich, glycosylphosphatidylinositol-anchored protein of 181 amino acids with a single Ig-like domain weakly homologous to KIR2DL4 molecule. CD160 is expressed at the cell surface as a tightly disulfide-linked multimer. RNA blot analysis revealed CD160 mRNAs of 1.5 and 1.6 kb whose expression was highly restricted to circulating NK and T cells, spleen and small intestine. Within NK cells CD160 is expressed by CD56dimCD16 cells whereas among circulating T cells its expression is mainly restricted to TCRgd bearing cells and to TCRab CD8brightCD95 CD56 CD28-CD27-cells. In tissues, CD160 is expressed on all intestinal intraepithelial lymphocytes. CD160 shows a broad specificity for binding to both classical and nonclassical MHC class I molecules. [provided by RefSeq, Jul 2008]

Species/Host: HEK293

Molecular Weight: The protein has a predicted molecular mass of 15.6 kDa after removal of the signal peptide. The apparent molecular mass of CD160-His is approximately 15-25 kDa due to glycosylation.

Molecular Characterization: CD160(Ile27-Ser159) 6×His tag

纯化:: The purity of the protein is greater than 95% as determined by SDS-PAGE and Coomassie blue staining.

Formulation & Reconstitution: Lyophilized from nanodisc solubilization buffer (20 mM Tris-HCl, 150 mM NaCl, pH 8.0). Normally 5% – 8% trehalose is added as protectants before lyophilization.

储存和运输: Store at -20°C to -80°C for 12 months in lyophilized form. After reconstitution, if not intended for use within a month, aliquot and store at -80°C (Avoid repeated freezing and thawing). Lyophilized proteins are shipped at ambient temperature.

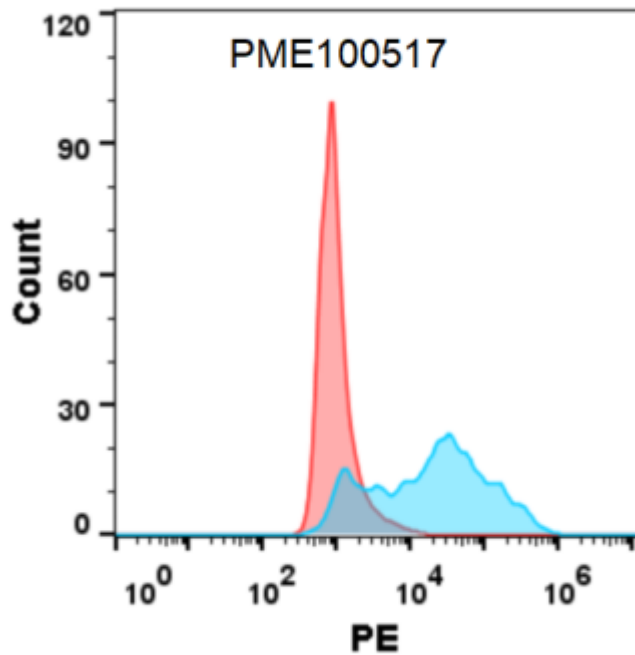


Figure 1. Flow cytometry analysis with CD160 (DMC270) on Expi293 cells transfected with human CD160 (Blue histogram) or Expi293 transfected with irrelevant protein (Red histogram).