

## HUMAN BCAM PROTEIN, HIS TAG

**Cat.#:** 11809

**Product Name:** Human BCAM Protein

**Size:** 10 µg, 50 µg and 100 µg

**Synonyms:** AU;CD239;LU;MSK19

**Target:** BCAM

**UNIPROT ID:** P50895

**Description:** Recombinant human BCAM protein with C-terminal 6xHis tag

**Background:** This gene encodes Lutheran blood group glycoprotein, a member of the immunoglobulin superfamily and a receptor for the extracellular matrix protein, laminin. The protein contains five extracellular immunoglobulin domains, a single transmembrane domain, and a short C-terminal cytoplasmic tail. This protein may play a role in epithelial cell cancer and in vaso-occlusion of red blood cells in sickle cell disease. Polymorphisms in this gene define some of the antigens in the Lutheran system and also the Auberger system. Inactivating variants of this gene result in the recessive Lutheran null phenotype, Lu(a-b-), of the Lutheran blood group. Two transcript variants encoding different isoforms have been found for this gene. [provided by RefSeq, May 2012]

**Species/Host:** HEK293

**Molecular Weight:** The protein has a predicted molecular mass of 57.0 kDa after removal of the signal peptide. The apparent molecular mass of BCAM-His is approximately 55-100 kDa due to glycosylation.

**Molecular Characterization:** BCAM(Glu32-Ala547) 6xHis tag

**Purity:** The purity of the protein is greater than 85% as determined by SDS-PAGE and Coomassie blue staining.

**Formulation & Reconstitution:** Lyophilized from nanodisc solubilization buffer (20 mM Tris-HCl, 150 mM NaCl, pH 8.0). Normally 5% – 8% trehalose is added as protectants before lyophilization.

**Storage & Shipping:** Store at -20°C to -80°C for 12 months in lyophilized form. After reconstitution, if not intended for use within a month, aliquot and store at -80°C (Avoid repeated freezing and thawing). Lyophilized proteins are shipped at ambient temperature.

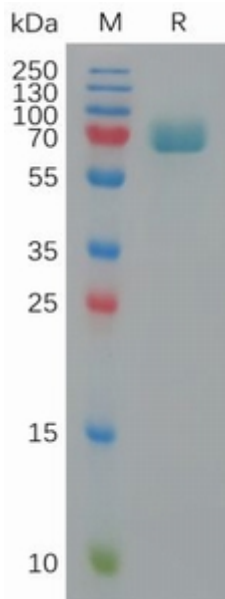


Figure 1. Human BCAM Protein, His Tag on SDS-PAGE under reducing condition.