

HRAS(G13A)

Ras(G13A)

Cat. #: 26191

Gene Symbol: H-Ras; K-Ras; N-Ras

Description: Anti-HRAS(G13A) Mouse Monoclonal Antibody

Background: Belongs to the small GTPase superfamily. Ras family binds GDP/GTP and possess intrinsic GTPase activity, alternate between an inactive form bound to GDP and an active form bound to GTP. Activated by a guanine nucleotide-exchange factor (GEF) and inactivated by a GTPase-activating protein (GAP). Located in cell membrane, lipid-anchor, cytoplasmic side and Golgi apparatus membrane.

Immunogen: A synthetic peptide from the internal region of HRas which includes the mutation of G13A, human origin.

Applications: ELISA, WB, IHC

Recommended Dilutions:

ELISA: 1:1000-1:5000

WB: 1:500-1:1000

IHC: 1:50-1:100

Concentration: 1 mg/ml

Host Species: Mouse

Format: Liquid

Clonality: Monoclonal

Isotype: IgG

Purity: Purified from ascites

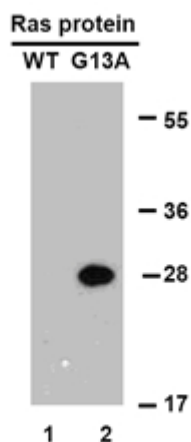
Preservative: No

Constituents: PBS (without Mg²⁺ and Ca²⁺), pH 7.4, 150 mM NaCl, 50% glycerol

Species Reactivity: Recognizes G13A mutant, but not wild type H-RAS of vertebrates.

Storage Conditions: Store at -20°C. Avoid repeated freezing and thawing

Western blot:

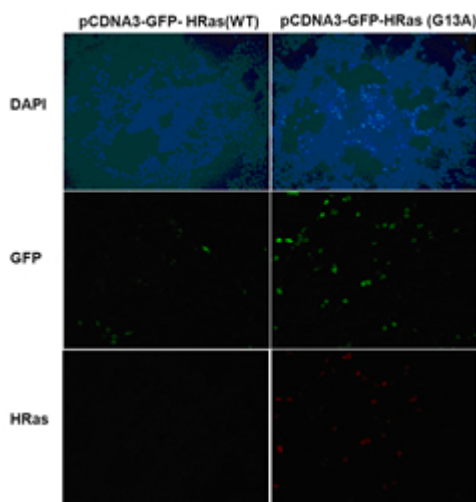


WB: anti-Ras (G13A) mAb

Western blot analysis of recombinant HRAS(G13A) and wild type proteins.

Purified His-tagged HRAS(G13A) protein (lane 2) and corresponding wild type protein (lane 1) were blotted with Anti-HRAS(G13A) monoclonal antibody (Cat. #26191).

Immunofluorescence:



Immunofluorescence of cells expressing Ras proteins with Anti-HRAS(G13A) antibody. HEK293T cells were transfected with pCDNA3-GFP-HRas (WT) plasmid (left column) or pCDNA3-GFP-HRAS(G13A) plasmid (right column), then fixed and stained with Anti-HRAS(G13A) monoclonal antibody (Cat. #26191).