

GUCY2C (DMC387) IGG1 CHIMERIC MAB

目录: 28205

产品名称: GUCY2C(DMC387) IgG1 Chimeric Monoclonal Antibody

基因符号: DIAR6; GC-C; GUC2C; MECIL; MUCIL; STAR

描述: GUCY2C antibody(DMC387) IgG1 Chimeric Monoclonal Antibody

背景: This gene encodes a transmembrane protein that functions as a receptor for endogenous peptides guanylin and uroguanylin; and the heat-stable E. coli enterotoxin. The encoded protein activates the cystic fibrosis transmembrane conductance regulator. Mutations in this gene are associated with familial diarrhea (autosomal dominant) and meconium ileus (autosomal recessive).

经过测试的应用: Flow Cyt

推荐稀释度: Flow Cyt 1:100

种属反应性: Rabbit

亚型: Rabbit:Human Fc chimeric IgG1

纯化: Purified from cell culture supernatant by affinity chromatography

种属反应性: Human GUCY2C

成分: Lyophilized from sterile PBS, pH 7.4. 5 % – 8% trehalose is added as protectants before lyophilization.

储存和运输: Store at -20°C to -80°C for 12 months in lyophilized form.

After reconstitution, if not intended for use within a month, aliquot and store at -80°C (Avoid repeated freezing and thawing).

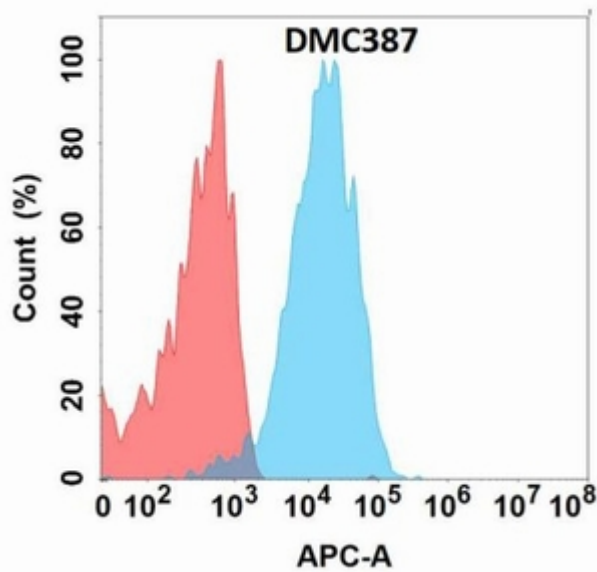


Figure 1. Flow cytometry analysis with GUCY2C (DMC387) on Expi293 cells transfected with human GUCY2C (Blue histogram) or Expi293 transfected with irrelevant protein (Red histogram).