

GRB7 PAB

GRB7 Polyclonal Antibody

货号: 21218

基因符号: GRB7

描述: GRB7 Rabbit Polyclonal Antibody

背景: Grb7 is an adaptor protein that interacts with epidermal growth factor receptor (EGFR) and ephrin receptors. It plays a role in the integrin signaling pathway and cell migration by binding with focal adhesion kinase (FAK). Grb7 gene is commonly co-amplified (present in excess copies) in breast cancers. Grb7 is over-expressed in testicular germ cell tumors, esophageal cancers, and gastric cancers. There are clues that it involved in cell migration and metastatic progression of human esophageal carcinomas.

免疫原: A synthetic peptide from the C-terminus of GRB7 protein, human origin.

经过测试的应用: ELISA, WB, IHC

推荐稀释度:

ELISA: 1:1000-1:5000

WB: 1:250-1:1000

IHC: 1:50-1:100

浓度: 0.5 mg/ml

种属反应性: Rabbit

形式: Liquid

克隆性: Polyclonal

亚型: IgG

纯化:: Purified from serum

Preservative: No

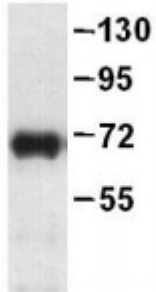
成分: PBS (without Mg^{2+} and Ca^{2+}), pH 7.4, 150 mM NaCl, 50% glycerol

种属反应性: GRB7 rabbit polyclonal antibody recognizes GRB7 from vertebrates.

储存条件:: Store at $-20^{\circ}C$. Avoid repeated freezing and thawing.

Western blot:

GRB7 protein



WB: Anti-GRB7 pAb

Western blot analysis of GRB7 proteins. Whole-cell lysate of MEF cells was blotted with GRB7 polyclonal antibody (货号26071).