

GPRC5D (DM89) RABBIT MAB

目录: 28419

产品名称: GPRC5D(DM89) Rabbit Monoclonal Antibody

基因符号: GPRC5D

描述: GPRC5D antibody(DM89) Rabbit Monoclonal Antibody

背景: The protein encoded by this gene is a member of the G protein-coupled receptor family; however, the specific function of this gene has not yet been determined.

经过测试的应用: ELISA; Flow Cyt

推荐稀释度: ELISA 1:5000-10000; Flow Cyt 1:100

种属反应性: Rabbit

亚型: Rabbit IgG

纯化: Purified from cell culture supernatant by affinity chromatography

种属反应性: Human GPRC5D

成分: Lyophilized from sterile PBS, pH 7.4. 5% - 8% trehalose is added as protectants before lyophilization.

储存和运输: Store at -20°C to -80°C for 12 months in lyophilized form. After reconstitution, if not intended for use within a month, aliquot and store at -80°C (Avoid repeated freezing and thawing).

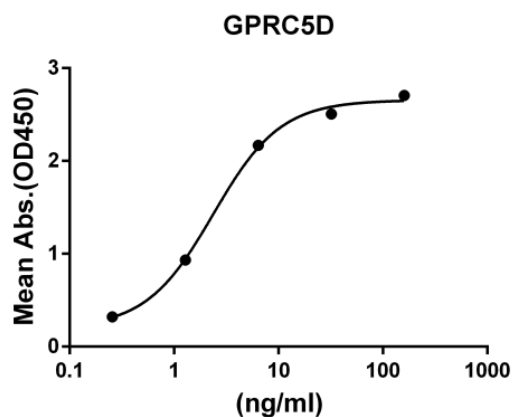


Figure 1. ELISA plate pre-coated by 2 µg/ml (100 µl/well) Human GPRC5D protein, hFc-His tagged protein 11189 can bind Rabbit GPRC5D monoclonal antibody (clone: DM89) in a linear range of 0.256-32 ng/ml.

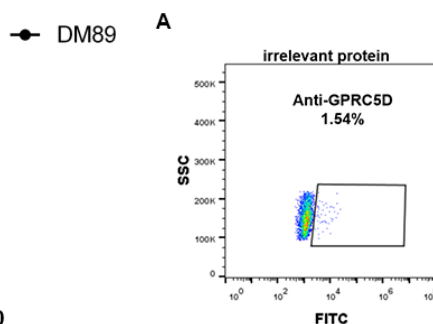


Figure 2. Expi 293 cell line transfected with irrelevant protein (A) and human GPRC5D (B) were surface stained with Rabbit GPRC5D monoclonal antibody 1 µg/ml (clone: DM89) followed by Alexa 488-conjugated rabbit IgG secondary antibody.