

## GPRC5D (DM60) RABBIT MAB

目录: 28363

产品名称: GPRC5D(DM60) Rabbit Monoclonal Antibody

基因符号: GPRC5D

描述: GPRC5D antibody(DM60) Rabbit Monoclonal Antibody

背景: The protein encoded by this gene is a member of the G protein-coupled receptor family; however, the specific function of this gene has not yet been determined.

经过测试的应用: ELISA; Flow Cyt

推荐稀释度: ELISA 1:5000-10000; Flow Cyt 1:100

种属反应性: Rabbit

亚型: Rabbit IgG

纯化: Purified from cell culture supernatant by affinity chromatography

种属反应性: Human GPRC5D

成分: Lyophilized from sterile PBS, pH 7.4. 5% - 8% trehalose is added as protectants before lyophilization.

储存和运输: Store at -20°C to -80°C for 12 months in lyophilized form. After reconstitution, if not intended for use within a month, aliquot and store at -80°C (Avoid repeated freezing and thawing).

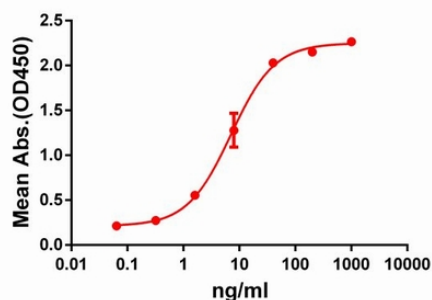


Figure 1. ELISA plate pre-coated by 2 µg/ml (100 µl/well) Human GPRC5D protein, hFc-His tagged protein 11189 can bind Rabbit GPRC5D monoclonal antibody (clone: DM60) in a linear range of 1-100 ng/ml.

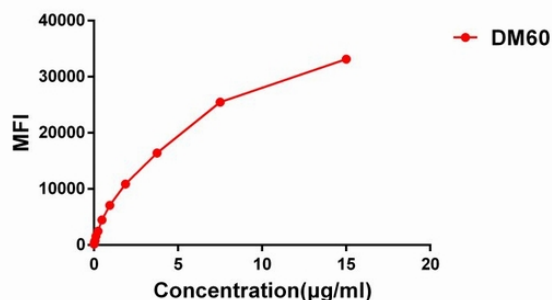


Figure 3. Flow cytometry data of serially titrated Rabbit GPRC5D monoclonal antibody (clone: DM60) on H929 cells. The Y-axis represents the mean fluorescence intensity (MFI) while the X-axis represents the concentration of IgG used.

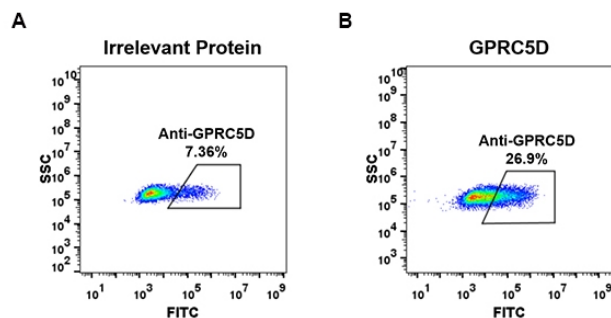


Figure 2. Expi 293 cell line transfected with irrelevant protein (A) and human GPRC5D (B) were surface stained with Rabbit GPRC5D monoclonal antibody 15µg/ml (clone: DM60) followed by Alexa 488-conjugated rabbit IgG secondary antibody.

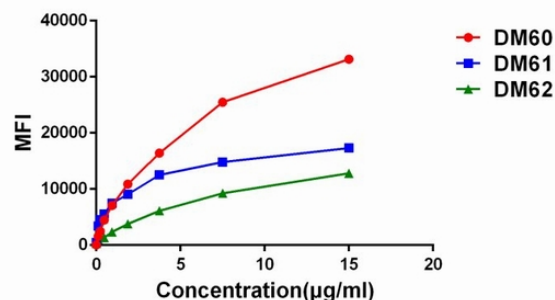


Figure 4. Affinity ranking of different Rabbit GPRC5D mAb clones by titration of different concentration onto H929 cells. The Y-axis represents the mean fluorescence intensity (MFI) while the X-axis represents the concentration of IgG used.