

GP6 (DMC427) IGG1 CHIMERIC MAB

目录: 28221

产品名称: GP6(DMC427) IgG1 Chimeric Monoclonal Antibody

基因符号: BDPLT11; GPIV; GPVI

描述: GP6 antibody(DMC427) IgG1 Chimeric Monoclonal Antibody

背景: This gene encodes a platelet membrane glycoprotein of the immunoglobulin superfamily. The encoded protein is a receptor for collagen and plays a critical role in collagen-induced platelet aggregation and thrombus formation. The encoded protein forms a complex with the Fc receptor gamma-chain that initiates the platelet activation signaling cascade upon collagen binding. Mutations in this gene are a cause of platelet-type bleeding disorder-11 (BDPLT11). Alternatively spliced transcript variants encoding multiple isoforms have been observed for this gene.

经过测试的应用: Flow Cyt

推荐稀释度: Flow Cyt 1:100

种属反应性: Rabbit

亚型: Rabbit:Human Fc chimeric IgG1

纯化: Purified from cell culture supernatant by affinity chromatography

种属反应性: Human GP6

成分: Lyophilized from sterile PBS, pH 7.4. 5 % – 8% trehalose is added as protectants before lyophilization.

储存和运输: Store at -20°C to -80°C for 12 months in lyophilized form.

After reconstitution, if not intended for use within a month, aliquot and store at -80°C (Avoid repeated freezing and thawing).

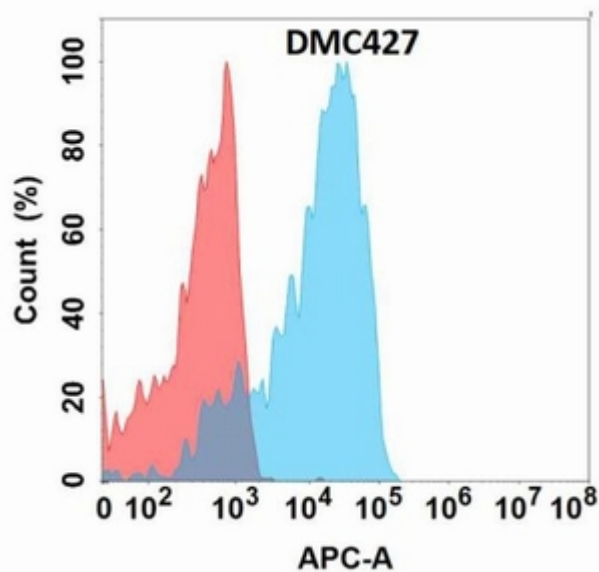


Figure 1. Flow cytometry analysis with GP6 (DMC427) on Expi293 cells transfected with human GP6 (Blue histogram) or Expi293 transfected with irrelevant protein (Red histogram).