

GA_q(Q209L)**Gα_q(Q209L)**

货号: 26328

基因符号: GNAQ, CMC1, G-ALPHA-q, GAQ, SWS

描述: GNAQ(Q209L) 小鼠单克隆抗体

背景: GNAQ is a protein that in humans encoded by the GNAQ gene. The GNAQ protein, an alpha subunit in the Gq class, couples a seven-transmembrane domain receptor to activation of phospholipase C-beta. Mutations at this locus have been associated with problems in platelet activation and aggregation.

免疫原: A synthetic peptide from the internal region of GNAQ which includes the mutation of Q209L, human origin.

经过测试的应用: ELISA, IF, IHC

推荐稀释度:

ELISA: 1:1000-1:2000 WB: 1:500-1:1000 IHC: 1:50-1:100

浓度: 1 mg/ml

种属反应性: Mouse

形式: Liquid

克隆性: Monoclonal

亚型: IgG

纯化: Purified from ascites

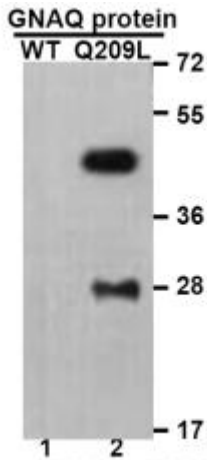
Preservative: No

成分: PBS (without Mg²⁺ and Ca²⁺), pH 7.4, 150 mM NaCl, 50% glycerol

种属反应性: Recognizes Gα_q(Q209L) mutant, but not wild type Gα_q of vertebrates.

储存条件: Store at -20°C. Avoid repeated freezing and thawing

Immunofluorescence:



WB: anti-GNAQ (Q209L) mAb

Western blot analysis of recombinant GNAQ(Q209L) and wild type proteins. Purified His-tagged GNAQ(Q209L) protein (lane 2) and corresponding wild type protein (lane 1) were blotted with GNAQ(Q209L) monoclonal antibody (货号 26328).