

GM-CSF (DM200) RABBIT MAB

Cat.#: 28543

Product Name: Anti-GM-CSF(DM200) Rabbit Monoclonal Antibody

Synonyms: CSF; GMCSF

Description: Anti-GM-CSF antibody(DM200) Rabbit Monoclonal Antibody

Background: The protein encoded by this gene is a cytokine that controls the production; differentiation; and function of granulocytes and macrophages. The active form of the protein is found extracellularly as a homodimer. This gene has been localized to a cluster of related genes at chromosome region 5q31; which is known to be associated with interstitial deletions in the 5q- syndrome and acute myelogenous leukemia. Other genes in the cluster include those encoding interleukins 4; 5; and 13. This gene plays a role in promoting tissue inflammation. Elevated levels of cytokines; including the one produced by this gene; have been detected in SARS-CoV-2 infected patients that develop acute respiratory distress syndrome. Mice deficient in this gene or its receptor develop pulmonary alveolar proteinosis. [provided by RefSeq; Aug 2020]

Applications: ELISA; Flow Cyt

Recommended Dilutions: ELISA 1:5000-10000; Flow Cyt 1:100

Host Species: Rabbit

Isotype: Rabbit IgG

Purification: Purified from cell culture supernatant by affinity chromatography

Species Reactivity: Human GM-CSF

Constituents: Lyophilized from sterile PBS, pH 7.4. 5 % – 8% trehalose is added as protectants before lyophilization.

Storage & Shipping: Store at -20°C to -80°C for 12 months in lyophilized form. After reconstitution, if not intended for use within a month, aliquot and store at -80°C (Avoid repeated freezing and thawing).

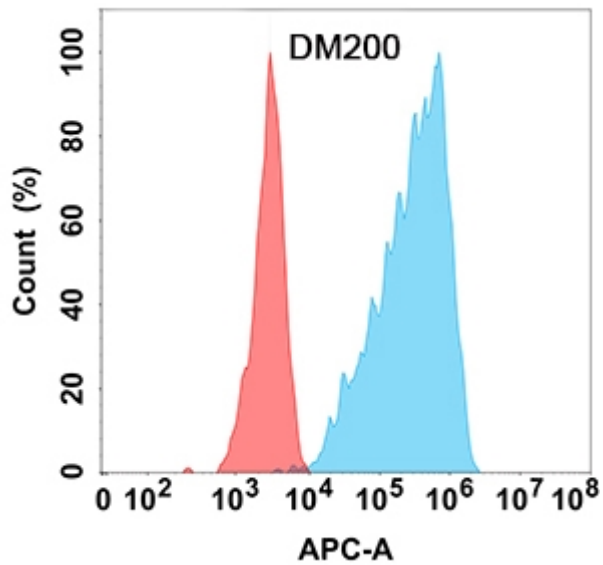


Figure 1. Flow cytometry analysis with Anti-GM-CSF (DM200) on Expi293 cells transfected with human GM-CSF (Blue histogram) or Expi293 transfected with irrelevant protein (Red histogram).