

GDNF (DMC498) IGG1 CHIMERIC MAB

目录: 28271

产品名称: GDNF(DMC498) IgG1 Chimeric Monoclonal Antibody

基因符号: ATF; ATF1; ATF2; HFB1-GDNF; HSCR3

描述: GDNF antibody(DMC498) IgG1 Chimeric Monoclonal Antibody

背景: This gene encodes a secreted ligand of the TGF-beta (transforming growth factor-beta) superfamily of proteins. Ligands of this family bind various TGF-beta receptors leading to recruitment and activation of SMAD family transcription factors that regulate gene expression. The encoded preproprotein is proteolytically processed to generate each subunit of the disulfide-linked homodimer. The recombinant form of this protein; a highly conserved neurotrophic factor; was shown to promote the survival and differentiation of dopaminergic neurons in culture; and was able to prevent apoptosis of motor neurons induced by axotomy. This protein is a ligand for the product of the RET (rearranged during transfection) protooncogene. Mutations in this gene may be associated with Hirschsprung disease and Tourette syndrome. This gene encodes multiple protein isoforms that may undergo similar proteolytic processing. [provided by RefSeq; Aug 2016]

经过测试的应用: Flow Cyt

推荐稀释度: Flow Cyt 1:100

种属反应性: Rabbit

亚型: Rabbit:Human Fc chimeric IgG1

纯化: Purified from cell culture supernatant by affinity chromatography

种属反应性: Human GDNF

成分: Lyophilized from sterile PBS, pH 7.4. 5 % – 8% trehalose is added as protectants before lyophilization.

储存和运输: Store at -20°C to -80°C for 12 months in lyophilized form.

After reconstitution, if not intended for use within a month, aliquot and store at -80°C (Avoid repeated freezing and thawing).

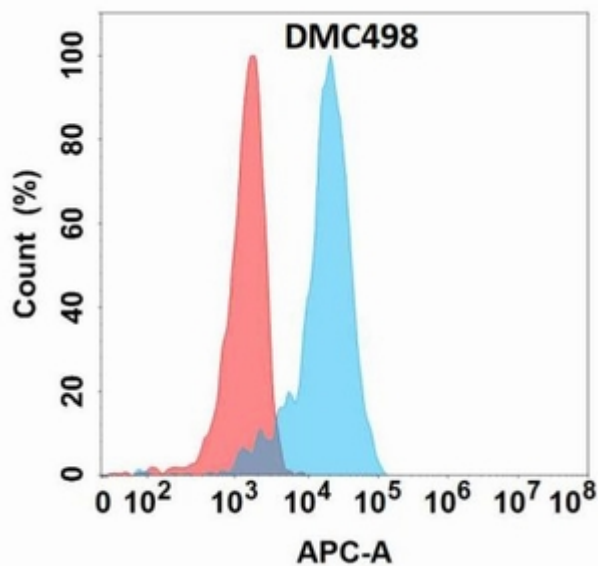


Figure 1. Flow cytometry analysis with GDNF (DMC498) on Expi293 cells transfected with human GDNF (Blue histogram) or Expi293 transfected with irrelevant protein (Red histogram).