

## **GDF15 (DMC474) IGG1 CHIMERIC MAB**

目录: 28250

产品名称: GDF15(DMC474) IgG1 Chimeric Monoclonal Antibody

基因符号: GDF-15; MIC-1; MIC1; NAG-1; PDF; PLAB; PTGFB

描述: GDF15 antibody(DMC474) IgG1 Chimeric Monoclonal Antibody

背景: This gene encodes a secreted ligand of the TGF-beta (transforming growth factor-beta) superfamily of proteins. Ligands of this family bind various TGF-beta receptors leading to recruitment and activation of SMAD family transcription factors that regulate gene expression. The encoded preproprotein is proteolytically processed to generate each subunit of the disulfide-linked homodimer. The protein is expressed in a broad range of cell types; acts as a pleiotropic cytokine and is involved in the stress response program of cells after cellular injury. Increased protein levels are associated with disease states such as tissue hypoxia; inflammation; acute injury and oxidative stress. [provided by RefSeq; Aug 2016]

经过测试的应用: Flow Cyt

推荐稀释度: Flow Cyt 1:100

种属反应性: Rabbit

亚型: Rabbit:Human Fc chimeric IgG1

纯化: Purified from cell culture supernatant by affinity chromatography

种属反应性: Human GDF15

成分: Lyophilized from sterile PBS, pH 7.4. 5 % - 8% trehalose is added as protectants before lyophilization.

储存和运输: Store at -20°C to -80°C for 12 months in lyophilized form.

After reconstitution, if not intended for use within a month, aliquot and store at -80°C (Avoid repeated freezing and thawing).

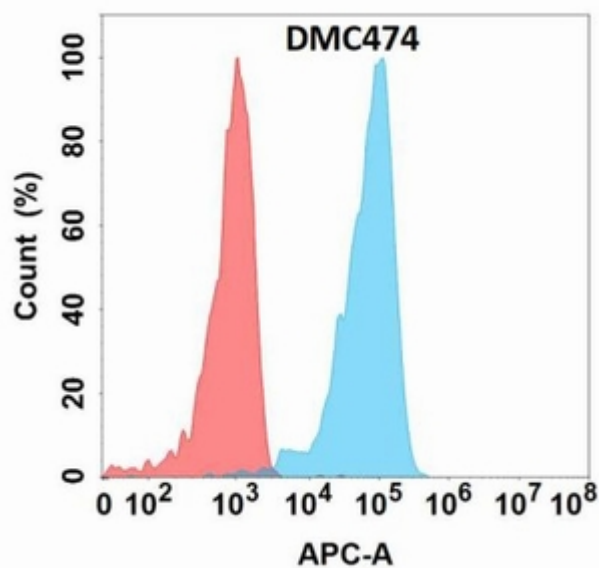


Figure 1. Flow cytometry analysis with GDF15 (DMC474) on Expi293 cells transfected with human GDF15 (Blue histogram) or Expi293 transfected with irrelevant protein (Red histogram).