

GAPDH PAB

GAPDH Polyclonal Antibody

货号: 21012

基因符号: GAPDH

描述: GAPDH Rabbit Polyclonal Antibody

背景: Glyceraldehyde-3-phosphate dehydrogenase (GAPDH) catalyzes the reversible oxidative phosphorylation of glyceraldehyde-3-phosphate, an important energy-yielding step in carbohydrate metabolism. Additional functions of GAPDH include acting as a uricil DNA glycosylase, activating transcription, binding RNA and involvement in nuclear RNA export, DNA replication and DNA repair. Furthermore, expression of GAPDH is upregulated in liver, lung and prostate cancers. Moreover, GAPDH complexes with neuronal proteins implicated in human neuro-degenerative disorders including the β -Amyloid precursor, Huntingtin and other triplet repeat neuronal disorder proteins.

免疫原: A synthetic peptide near the C-terminus of GAPDH of human origin

经过测试的应用: ELISA, WB, IHC

推荐稀释度:

ELISA 1:100-1:5000

WB 1:100-1:2000

IHC 1:50-1:100

浓度: 0.2 mg/ml

种属反应性: Rabbit

形式: Liquid

克隆性: Polyclonal

亚型: IgG

纯化:: Purified from serum

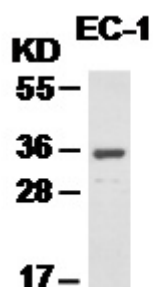
Preservative: No

成分: PBS (without Mg^{2+} and Ca^{2+}), pH 7.4, 150 mM NaCl, 50% glycerol

种属反应性: GAPDH antibody recognizes GAPDH of vertebrates

储存条件:: Store at $-20^{\circ}C$. Avoid repeated freezing and thawing

Western blot:



WB: anti-GAPDH pAb

EC-1 cell lysate was used for Western blot with GAPDH polyclonal antibody (Cat # 21012).