

GAI PAB

Gα_i Polyclonal Antibody

货号: 21006

基因符号: Gα_i

描述: Gα_i Rabbit Polyclonal Antibody

背景: Heterotrimeric G proteins are critical cellular signal transducers. Gα_i represents one sub-family of G proteins that could mediate the inhibition of adenylyl cyclases. Other biochemical and physiological functions of Gα_i proteins are being explored.

免疫原: Recombinant full length protein of Gα_{i1}

经过测试的应用: ELISA, WB, IHC

推荐稀释度: ELISA 1:100-1:5000, WB 1:100-1:2000

浓度: 1 mg/ml

种属反应性: Rabbit

形式: Liquid

克隆性: Polyclonal

亚型: IgG

纯化:: Purified from serum

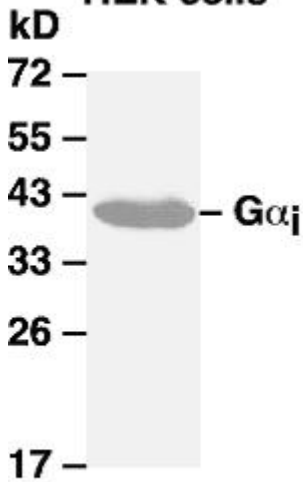
Preservative: No

成分: PBS (without Mg²⁺ and Ca²⁺), pH 7.4, 150 mM NaCl, 50% glycerol

种属反应性: Gα_i antibody recognizes Gα_{i1}, Gα_{i2}, and Gα_{i3} of vertebrates

储存条件:: Store at -20°C. Avoid repeated freezing and thawing

Western blot:
HEK cells



WB: anti- $G\alpha_i$ pAb

Western blot analysis of Gi proteins.

$G\alpha_i$ plasmid DNA was transiently transfected into HEK-293 cells. Whole-cell lysate was used for western blot with the polyclonal anti $G\alpha_i$ antibody (cat # 21006).