

FGFR1(S125L)

FGFR1(S125L)

货号: 26252

基因符号: FGFR1, BFGFR, CD331, CEK, FGFBR, FLG

描述: FGFR1(S125L) 小鼠单克隆抗体

背景: The protein FGFR1 is highly conserved between members and throughout evolution. This particular family member of FGFR1 binds both acidic and basic fibroblast growth factors and is involved in limb induction. Mutations of FGFR1 protein have been associated with Pfeiffer syndrome, Jackson-Weiss syndrome, Antley-Bixler syndrome, osteoglophonic dysplasia, squamous cell lung cancer and autosomal dominant Kallmann syndrome.

免疫原: A synthetic peptide from the internal region of FGFR1 which includes the mutation of S125L, human origin.

经过测试的应用: ELISA, WB, IHC

推荐稀释度:

ELISA: 1:1000-1:2000

WB: 1:500-1:1000

IHC: 1:50-1:100

浓度: 1 mg/ml

种属反应性: Mouse

形式: Liquid

克隆性: Monoclonal

亚型: IgG

纯化: Purified from ascites

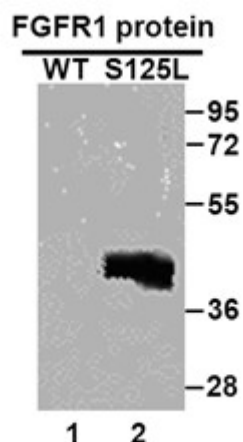
Preservative: No

成分: PBS (without Mg²⁺ and Ca²⁺), pH 7.4, 150 mM NaCl, 50% glycerol

种属反应性: Recognizes S125L mutant, but not wild type FGFR1 of vertebrates.

储存条件: Store at -20°C. Avoid repeated freezing and thawing

Western blot:



WB: Anti- FGFR1 (S125L) mAb

Western blot analysis of recombinant

FGFR1(S125L) and wild type proteins. Purified His-tagged FGFR1(S125L) protein (22-376aa, 45KD, lane 2,) and corresponding wild type protein (lane 1) were blotted with FGFR1(S125L) monoclonal antibody (货号26252).

Immunofluorescence. Immunofluorescence of cells expressing FGFR1 proteins with FGFR1(S125L) antibody. HEK293T cells were transfected with pCDNA3-GFP-FGFR1 (WT) plasmid (left column) or pCDNA3-GFP-FGFR1(S125L) plasmid (right column), then fixed and stained with FGFR1(S125L) monoclonal antibody (货号26252).

