

## FGFR1(P252S)

### FGFR1(P252S)

货号: 26254

基因符号: FGFR1, BFGFR, CD331, CEK, FGFBR, FLG

描述: FGFR1(P252S) 小鼠单克隆抗体

背景: The protein FGFR1 is highly conserved between members and throughout evolution. This particular family member of FGFR1 binds both acidic and basic fibroblast growth factors and is involved in limb induction. Mutations of FGFR1 protein have been associated with Pfeiffer syndrome, Jackson-Weiss syndrome, Antley-Bixler syndrome, osteoglophonic dysplasia, squamous cell lung cancer and autosomal dominant Kallmann syndrome.

免疫原: A synthetic peptide from the internal region of FGFR1 which includes the mutation of P252S, human origin.

经过测试的应用: ELISA, WB, IHC

推荐稀释度:

ELISA: 1:1000-1:2000

WB: 1:500-1:1000

IHC: 1:50-1:100

浓度: 1 mg/ml

种属反应性: Mouse

形式: Liquid

克隆性: Monoclonal

亚型: IgG

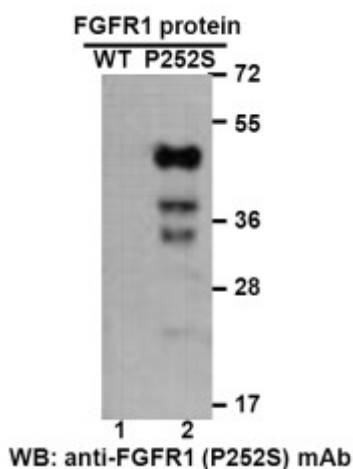
纯化: Purified from ascites

**Preservative:** No

成分: PBS (without Mg<sup>2+</sup> and Ca<sup>2+</sup>), pH 7.4, 150 mM NaCl, 50% glycerol

种属反应性: Recognizes P252S mutant, but not wild type FGFR1 of vertebrates.

储存条件: Store at -20°C. Avoid repeated freezing and thawing

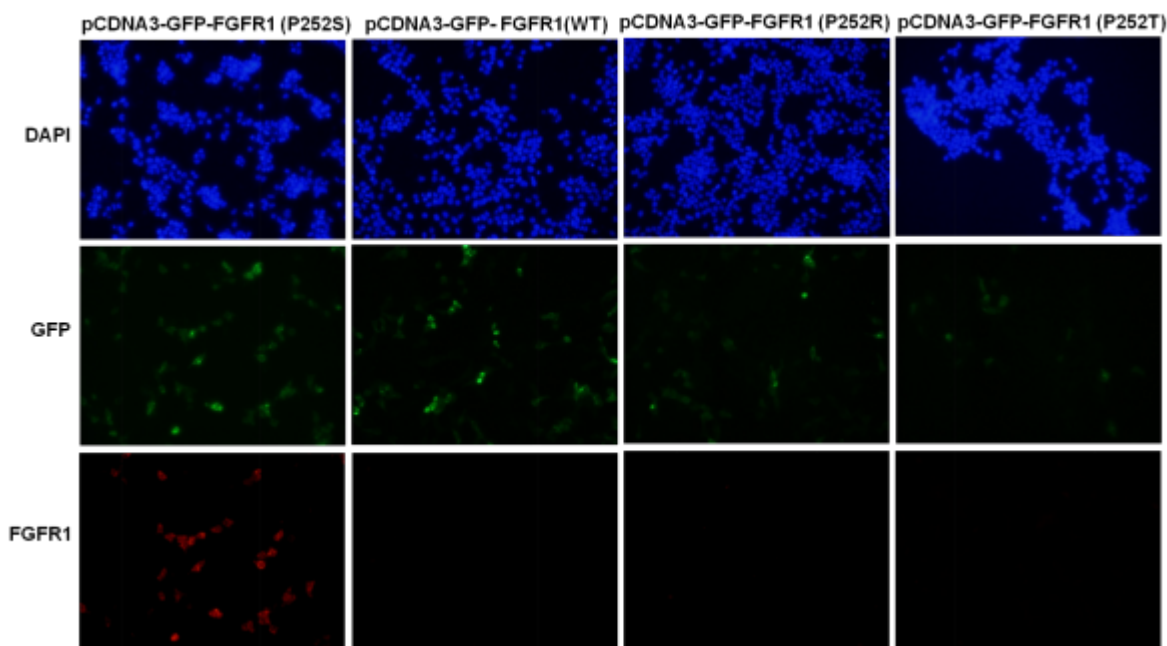


## Western blot:

### Western blot analysis of recombinant FGFR1(P252S) and wild type proteins.

Purified His-tagged FGFR1(P252S) protein (22-376aa, 45KD, lane 2) and corresponding wild type protein (lane 1) were blotted with FGFR1(P252S) monoclonal antibody (货号26254).

## Immunofluorescence:



### Immunofluorescence of cells expressing FGFR1 proteins with FGFR1(P252S) antibody.

HEK293T cells were transfected with pCDNA3-GFP-FGFR1(P252S) plasmid, pCDNA3-GFP-FGFR1 (WT) plasmid, pCDNA3-GFP-FGFR1 (P252R) plasmid or pCDNA3-GFP-FGFR1 (P252T) plasmid, then fixed and stained with FGFR1(P252S) monoclonal antibody (货号26254).