

FASCIN-NTERMINAL MAB

Fascin Monoclonal Antibody

Cat. #: 26012

Gene Symbol: FSCN1

Description: Anti-Fascin Mouse Monoclonal Antibody

Background: Fascin is an ~58 kDa monomeric actin filament bundling protein. It is required to maximally cross-link the actin filaments into straight, compact, and rigid bundles, and contributes to the formation of filopodia that are critical for cell migration. Elevated levels of fascin have been found in metastatic tumors and are correlated with clinically aggressive phenotypes, poor prognosis, and shorter survival.

Immunogen: A peptide from the N-terminal of human Fascin 1

Applications: ELISA, WB, IP, IHC

Recommended Dilutions:

ELISA: 1:1000–1:5000

WB: 1:100–1:2000

IP: 1 μ for 1~2 mg total cellular proteins

IHC: 1:100 dilution

Concentration: 1 mg/ml

Host Species: Mouse

Format: Liquid

Clonality: Monoclonal

Isotype: IgG

Purity: Purified from ascites

Preservative: No

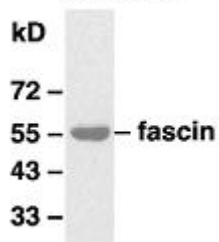
Constituents: PBS (without Mg^{2+} and Ca^{2+}), pH 7.4, 150 mM NaCl, 50% glycerol

Species Reactivity: Anti-fascin antibody recognizes fascin 1, 2 and 3 of vertebrates.

Storage Conditions: Store at $-20^{\circ}C$. Avoid repeated freezing and thawing

Western blot:

4T1 cells



WB: anti-fascin mAb

Western blot analysis of fascin proteins.

Whole-cell lysate of 4T1 mouse breast tumor cells was used for western blots with the monoclonal anti fascin antibody (Cat # 26012).