

## FOLR1 MAB (FARLETUZUMAB)

**Cat.#:** 28154

**Product Name:** Anti-FOLR1(Farletuzumab) Monoclonal Antibody

**Synonyms:** FBP;FOLR;FRalpha;NCFTD

**Description:** Anti-FOLR1(farletuzumab ) Monoclonal Antibody

**Background:** Research grade biosimilar. Not for use in therapeutic or diagnostic procedures for humans or animals.

**Applications:** ELISA, Flow Cyt

**Recommended Dilutions:** ELISA 1:5000-10000, Flow Cyt 1:100

**Host Species:** Humanized

**Isotype:** IgG1(E239D, M241L)

**Purification:** Purified from cell culture supernatant by affinity chromatography

**Species Reactivity:** Human FOLR1

**Constituents:** Lyophilized from sterile PBS, pH 7.4. 5% – 8% trehalose is added as protectants before lyophilization.

**Storage & Shipping:** Store at -20°C to -80°C for 12 months in lyophilized form. After reconstitution, if not intended for use within a month, aliquot and store at -80°C (Avoid repeated freezing and thawing).

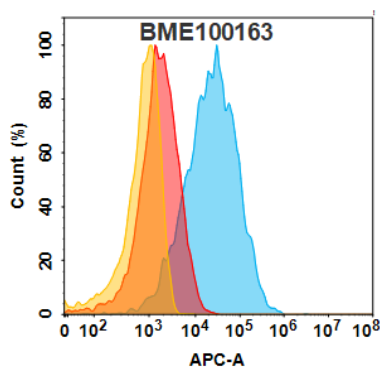


Figure 1. FOLR1 protein is highly expressed on the surface of Expi293 cell membrane. Flow cytometry analysis with 1µg/mL Anti-FOLR1(farletuzumab biosimilar) mAb (28154) on Expi293 cells transfected with human FOLR1 (Blue histogram) or Expi293 transfected with irrelevant protein (Red histogram),and Isotype antibody on Expi293 transfected with irrelevant protein (Orange histogram)

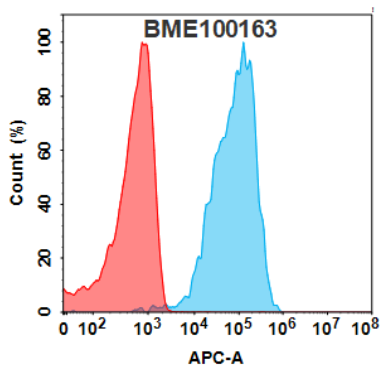


Figure 2. FOLR1 protein is highly expressed on the surface of HeLa cell membrane. Flow cytometry analysis with 1µg/mL Anti-FOLR1(farletuzumab biosimilar) mAb (28154) on HeLa cells (Blue histogram) or isotype control mAb (Red histogram) on HeLa cells.

### Anti-FOLR1(farletuzumab biosimilar) mAb ELISA

0.2 µg of Human FOLR1, His tagged protein per well

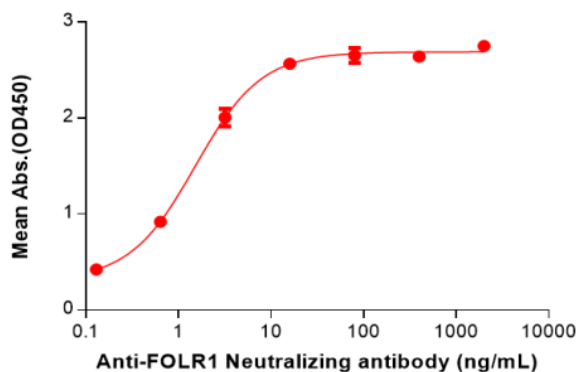


Figure 3. ELISA plate pre-coated by 2 µg/mL (100 µl/well) Human FOLR1 Protein, His Tag(11250) can bind Anti-FOLR1(farletuzumab biosimilar) mAb(28154) in a linear range of 0.64-16 ng/mL.



# Product Description

Pioneering GTPase and Oncogene Product Development since 2010

---