

FAP (DM154) RABBIT MAB

Cat.#: 28498

Product Name: Anti-FAP(DM154) Rabbit Monoclonal Antibody

Synonyms: FAP;FAPalpha;SIMP;Seprase;APCE

Description: Anti-FAP antibody(DM154) Rabbit Monoclonal Antibody

Background: The protein encoded by this gene is a homodimeric integral membrane gelatinase belonging to the serine protease family. It is selectively expressed in reactive stromal fibroblasts of epithelial cancers; granulation tissue of healing wounds; and malignant cells of bone and soft tissue sarcomas. This protein is thought to be involved in the control of fibroblast growth or epithelial-mesenchymal interactions during development; tissue repair; and epithelial carcinogenesis. Alternatively spliced transcript variants encoding different isoforms have been found for this gene.

Applications: ELISA; Flow Cyt

Recommended Dilutions: ELISA 1:5000-10000; Flow Cyt 1:100

Host Species: Rabbit

Isotype: Rabbit IgG

Purification: Purified from cell culture supernatant by affinity chromatography

Species Reactivity: Human FAP

Constituents: Lyophilized from sterile PBS, pH 7.4. 5% – 8% trehalose is added as protectants before lyophilization.

Storage & Shipping: Store at -20°C to -80°C for 12 months in lyophilized form. After reconstitution, if not intended for use within a month, aliquot and store at -80°C (Avoid repeated freezing and thawing).

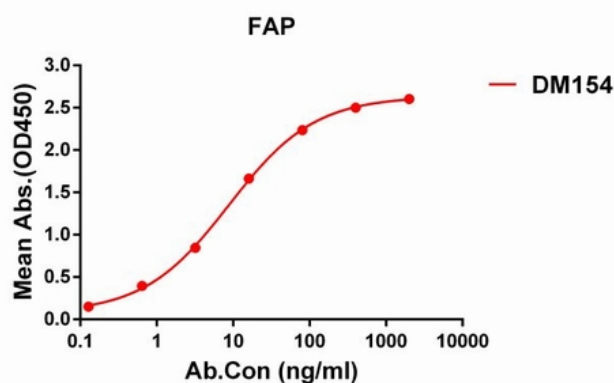


Figure 1. ELISA plate pre-coated by 1 µg/ml (100 µl/well) Human FAP protein, His tagged protein 11422 can bind Rabbit anti-FAP monoclonal antibody (clone: DM154) in a linear range of 1-500 ng/ml.

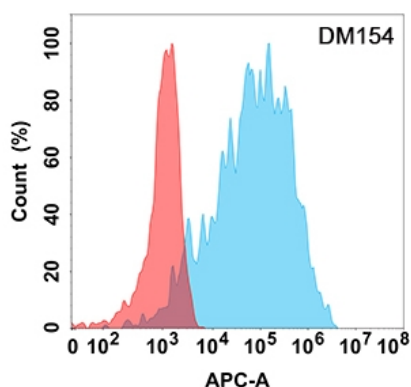


Figure 2. Flow cytometry analysis with Anti-FAP (DM154) on Expi293 cells transfected with human FAP (Blue histogram) or Expi293 transfected with irrelevant protein (Red histogram).