

## **EREG (DMC424) IGG1 CHIMERIC MAB**

目录: 28218

产品名称: EREG(DMC424) IgG1 Chimeric Monoclonal Antibody

基因符号: Ep; EPR; ER

描述: EREG antibody(DMC424) IgG1 Chimeric Monoclonal Antibody

背景: This gene encodes a secreted peptide hormone and member of the epidermal growth factor (EGF) family of proteins. The encoded protein is a ligand of the epidermal growth factor receptor (EGFR) and the structurally related erb-b2 receptor tyrosine kinase 4 (ERBB4). The encoded protein may be involved in a wide range of biological processes including inflammation; wound healing; oocyte maturation; and cell proliferation. Additionally; the encoded protein may promote the progression of cancers of various human tissues.

经过测试的应用: Flow Cyt

推荐稀释度: Flow Cyt 1:100

种属反应性: Rabbit

亚型: Rabbit:Human Fc chimeric IgG1

纯化: Purified from cell culture supernatant by affinity chromatography

种属反应性: Human EREG

成分: Lyophilized from sterile PBS, pH 7.4. 5 % – 8% trehalose is added as protectants before lyophilization.

储存和运输: Store at -20°C to -80°C for 12 months in lyophilized form.

After reconstitution, if not intended for use within a month, aliquot and store at -80°C (Avoid repeated freezing and thawing).

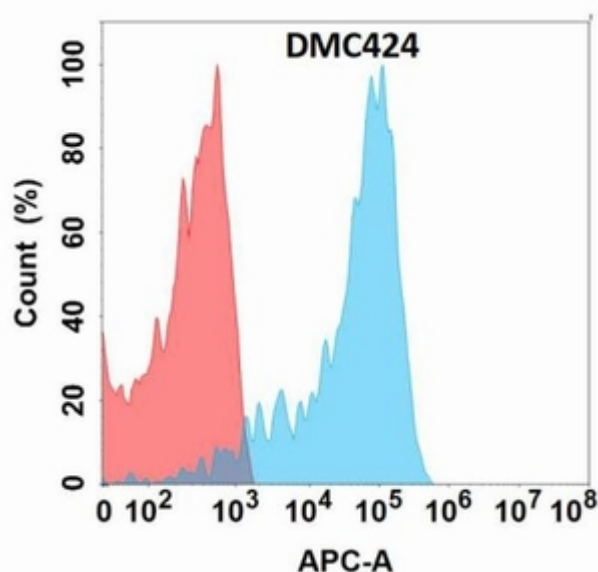


Figure 1. Flow cytometry analysis with EREG (DMC424) on Expi293 cells transfected with human EREG (Blue histogram) or Expi293 transfected with irrelevant protein (Red histogram).