

ERBB2(D769H)

ERBB2(D769H)

货号: 26381

基因符号: ERBB2/HER2/Neu/c-Neu

描述: ERBB2(D769H) 小鼠单克隆抗体

背景: The HER-2/neu oncogene, a member of the epidermal growth factor receptor or erb-B gene-like family, encodes a transmembrane tyrosine kinase receptor that mediates extracellular signals activated by epidermal growth factors. Her2 abnormal has been strongly associated with many malignant tumors, especially with breast cancers. The expression level of Her2 is an important criteria in clinic evaluating of the progression of breast cancer.

免疫原: A synthetic peptide from the internal region of ERBB2 which includes the mutation of D769H, human origin.

经过测试的应用: ELISA, WB, IHC

推荐稀释度:

ELISA: 1:1000-1:2000

WB: 1:500-1:1000

IF: 1:25-1:50

浓度: 1 mg/ml

种属反应性: Mouse

形式: Liquid

克隆性 ☒ Monoclonal

亚型: IgG

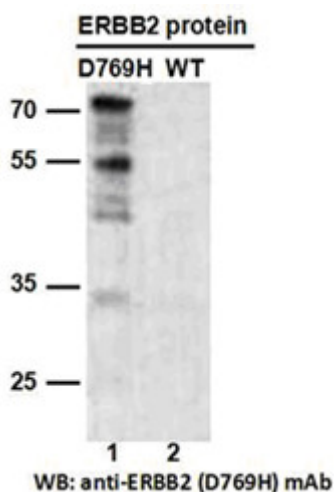
纯化:: Purified from ascites

Preservative: No

成分: PBS (without Mg²⁺ and Ca²⁺), pH 7.4, 150 mM NaCl, 50% glycerol

种属反应性: Recognizes D769H mutant, but not wild type ERBB2 of vertebrates.

储存条件:: Store at -20°C. Avoid repeated freezing and thawing

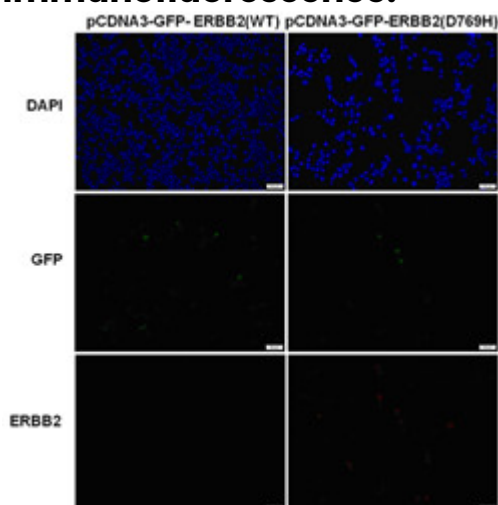


Western blot:

Western blot analysis of recombinant ERBB2(D769H) and wild type proteins.

Purified His-tagged ERBB2(D769H) protein (lane 1) and corresponding wild type protein (lane 2) were blotted with ERBB2(D769H) monoclonal antibody (货号26381).

Immunofluorescence:



Immunofluorescence of cells expressing ERBB2 proteins with ERBB2(D769H) antibody.

HEK293T cells were transfected with pCDNA3-GFP-ERBB2 (WT) plasmid (left column) or pCDNA3-GFP-ERBB2(D769H) plasmid (right column), then fixed and stained with ERBB2(D769H) monoclonal antibody (货号26381).