

ERBB2 PAB

ERBB2 Polyclonal Antibody

货号: 21200

基因符号: ERBB2/HER2/Neu/c-Neu

描述: ERBB2 Rabbit polyclonal Antibody

背景: The HER-2/neu oncogene, a member of the epidermal growth factor receptor or erb-B gene-like family, encodes a transmembrane tyrosine kinase receptor that mediates extracellular signals activated by epidermal growth factors. Her2 abnormal has been strongly associated with many malignant tumors, especially with breast cancers. The expression level of Her2 is an important criteria in clinic evaluating of the progression of breast cancer.

免疫原: A synthetic peptide from the C-terminal region of ERBB2, human origin.

经过测试的应用: ELISA, WB, IHC

推荐稀释度:

ELISA: 1:1000-1:5000

WB: 1:100-1:1000

IHC: 1:50-1:100

浓度: 0.1 mg/ml

种属反应性: Rabbit

形式: Liquid

克隆性: Polyclonal

亚型: IgG

纯化: Purified from serum

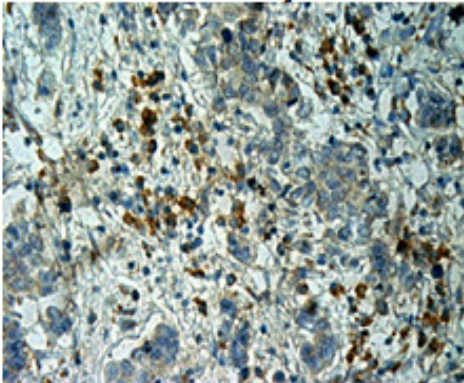
Preservative: No

成分: PBS (without Mg^{2+} and Ca^{2+}), pH 7.4, 150 mM NaCl, 50% glycerol

种属反应性: Recognizes Erb-B2 of vertebrates.

储存条件: Store at $-20^{\circ}C$. Avoid repeated freezing and thawing.

Immunohistochemistry:



Immunohistochemical analysis of paraffin-embedded human liver cancer tissue with Erb-B2 polyclonal antibody (货号21200). Tissue samples were fixed with formaldehyde and blocked with 1% serum for 15 min at 37 °C. Antigen retrieval was by heat mediation in citrate buffer (pH6). Samples were then incubated with primary antibody (1:50) overnight at 4°C. A HRP-conjugated Goat mouse IgG (dilution 1:50) was used as secondary antibody.