

EPHA4 (DMC472) IGG1 CHIMERIC MAB

Cat.#: 28248

Product Name: Anti-EPHA4(DMC472) IgG1 Chimeric Monoclonal Antibody

Synonyms: EK8; HEK8; SEK; TYRO1

Description: Anti-EPHA4 antibody(DMC472) IgG1 Chimeric Monoclonal Antibody

Background: This gene belongs to the ephrin receptor subfamily of the protein-tyrosine kinase family. EPH and EPH-related receptors have been implicated in mediating developmental events; particularly in the nervous system. Receptors in the EPH subfamily typically have a single kinase domain and an extracellular region containing a Cys-rich domain and 2 fibronectin type III repeats. The ephrin receptors are divided into 2 groups based on the similarity of their extracellular domain sequences and their affinities for binding ephrin-A and ephrin-B ligands. Multiple transcript variants encoding different isoforms have been found for this gene. [provided by RefSeq; Jan 2015]

Applications: Flow Cyt

Recommended Dilutions: Flow Cyt 1:100

Host Species: Rabbit

Isotype: Rabbit:Human Fc chimeric IgG1

Purification: Purified from cell culture supernatant by affinity chromatography

Species Reactivity: Human EPHA4

Constituents: Lyophilized from sterile PBS, pH 7.4. 5 % – 8% trehalose is added as protectants before lyophilization.

Storage & Shipping: Store at -20°C to -80°C for 12 months in lyophilized form. After reconstitution, if not intended for use within a month, aliquot and store at -80°C (Avoid repeated freezing and thawing).

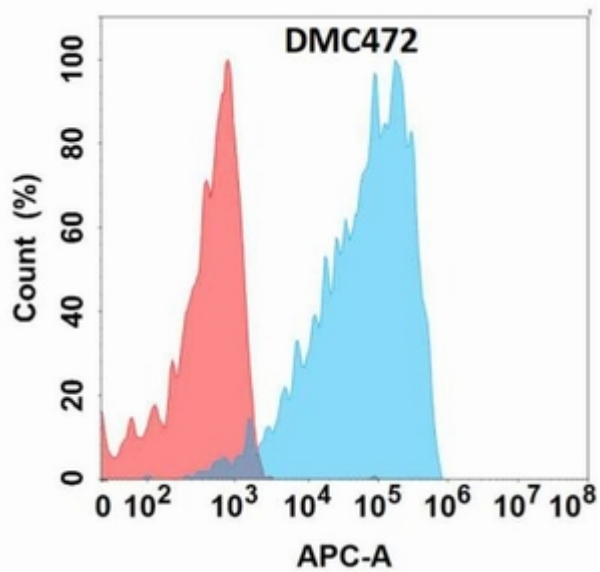


Figure 1. Flow cytometry analysis with Anti-EPHA4 (DMC472) on Expi293 cells transfected with human EPHA4 (Blue histogram) or Expi293 transfected with irrelevant protein (Red histogram).