

EPCAM (DM147) RABBIT MAB

目录: 28491

产品名称: EPCAM(DM147) Rabbit Monoclonal Antibody

基因符

号: EPCAM;TACSTD1;TROPI;CD326;DIAR5;EGP2;EGP314;EGP40;ESA;GA733-2;HNPCC8;HNPCC-8;KSI:4;KSA;M4S1;MIC18;MK1

描述: EPCAM antibody(DM147) Rabbit Monoclonal Antibody

背景: This gene encodes a carcinoma-associated antigen and is a member of a family that includes at least two type I membrane proteins. This antigen is expressed on most normal epithelial cells and gastrointestinal carcinomas and functions as a homotypic calcium-independent cell adhesion molecule. The antigen is being used as a target for immunotherapy treatment of human carcinomas. Mutations in this gene result in congenital tufting enteropathy.

经过测试的应用: ELISA; Flow Cyt

推荐稀释度: ELISA 1:5000-10000; Flow Cyt 1:100

种属反应性: Rabbit

亚型: Rabbit IgG

纯化: Purified from cell culture supernatant by affinity chromatography

种属反应性: Human EPCAM

成分: Lyophilized from sterile PBS, pH 7.4. 5% - 8% trehalose is added as protectants before lyophilization.

储存和运输: Store at -20°C to -80°C for 12 months in lyophilized form. After reconstitution, if not intended for use within a month, aliquot and store at -80°C (Avoid repeated freezing and thawing).

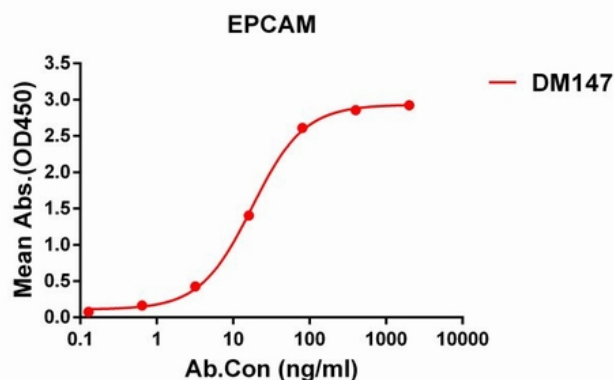


Figure 1. ELISA plate pre-coated by 1 µg/ml (100 µl/well) Human EPCAM protein, His tagged protein III191 can bind Rabbit EPCAM monoclonal antibody (clone: DM147) in a linear range of 5-100 ng/ml.

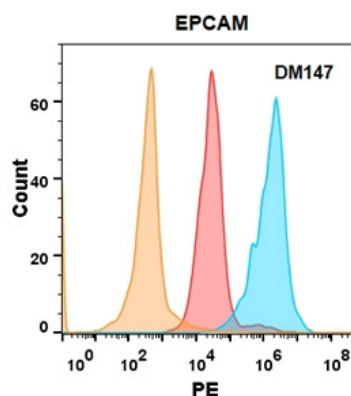


Figure 2. EPCAM protein is highly expressed on the surface of Expi293 cell membrane. Flow cytometry analysis with EPCAM (DM147) on Expi293 cells transfected with human EPCAM (Blue histogram) or Expi293 transfected with irrelevant protein (Red histogram), and Isotype antibody on Expi293 transfected with irrelevant protein (Orange histogram).