

## EGFR(S768I)

### EGFR(S768I)

货号: 26483

基因符号: EGFR/HER1/ERBB1

描述: EGFR(S768I) 小鼠单克隆抗体

背景: EGFR is a receptor tyrosine kinase binding ligands of the EGF family and activating several signaling cascades to convert extracellular cues into appropriate cellular responses. It activates at least 4 major downstream signaling cascades including the RAS-RAF-MEK-ERK, PI3 kinase-AKT, PLCgamma-PKC and STATs modules. Defects in EGFR are associated with lung cancer (LNCR).

免疫原: A synthetic peptide from the internal region of EGFR which includes the mutation of S768I, human origin.

经过测试的应用: ELISA, WB, IF, IHC

推荐稀释度:

ELISA: 1:1000-1:5000

WB: 1:1000-1:5000

IHC: 1:50-1:200

浓度: 1 mg/ml

种属反应性: Mouse

形式: Liquid

克隆性: Monoclonal

亚型:

纯化:: Purified from ascites

**Preservative:** No

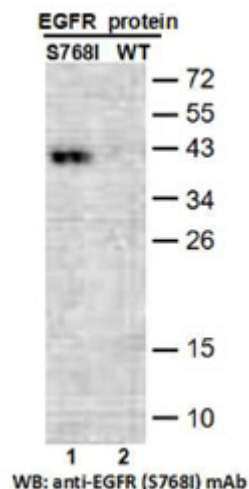
成分: PBS (without Mg<sup>2+</sup> and Ca<sup>2+</sup>), pH 7.4, 150 mM NaCl, 50% glycerol

种属反应性: Recognizes EGFR (S768I), but not wild type EGFR from vertebrates.

储存条件:: Store at -20°C. Avoid repeated freezing and thawing

### Western blot:

## Western blot:

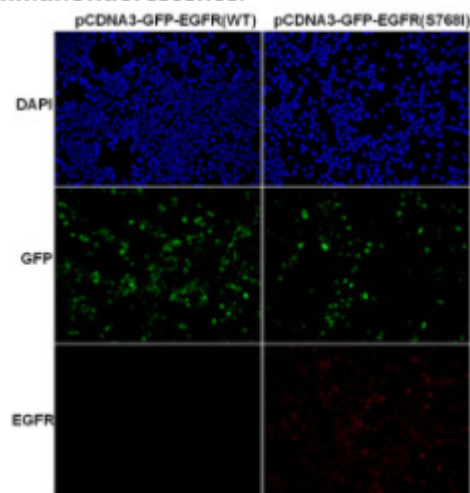


## Western blot analysis of recombinant EGFR (S768I) and wild type proteins.

Purified His-tagged EGFR (S768I) protein (lane 1) and corresponding wild type protein (amino acids 702–987, lane 2) were blotted with anti EGFR(S768I) mouse monoclonal antibody (货号26483).

## Immunofluorescence:

### Immunofluorescence:



## Immunofluorescence of cells expressing EGFR proteins with anti EGFR(S768I) antibody.

HEK293T cells were transfected with pCDNA3-GFP-EGFR (WT) plasmid (left column) or pCDNA3-GFP EGFR(S768I) plasmid (right column), then fixed and stained with EGFR (S768I) monoclonal antibody (货号26483).

