

**EGFR(L861Q)****EGFR(L861Q)**

货号: 26077

基因符号: EGFR/HER1/ERBB1

描述: EGFR(L861Q) 小鼠单克隆抗体

背景: EGFR is a receptor tyrosine kinase binding ligands of the EGF family and activating several signaling cascades to convert extracellular cues into appropriate cellular responses. It activates at least 4 major downstream signaling cascades including the RAS-RAF-MEK-ERK, PI3 kinase-AKT, PLC gamma-PKC and STATs modules. Defects in EGFR are associated with lung cancer (LNCR).

免疫原: A synthetic peptide from the internal region of EGFR which includes the mutation of L861Q, human origin.

**Tested** 经过测试的应用: ELISA, WB, IF, IHC

推荐稀释度:

ELISA: 1:1000-1:5000

WB: 1:1000-1:5000

IHC: 1:50-1:200

浓度: 1 mg/ml

种属反应性: Mouse

形式: Liquid

克隆性: Monoclonal

亚型:

纯化:: Purified from ascites

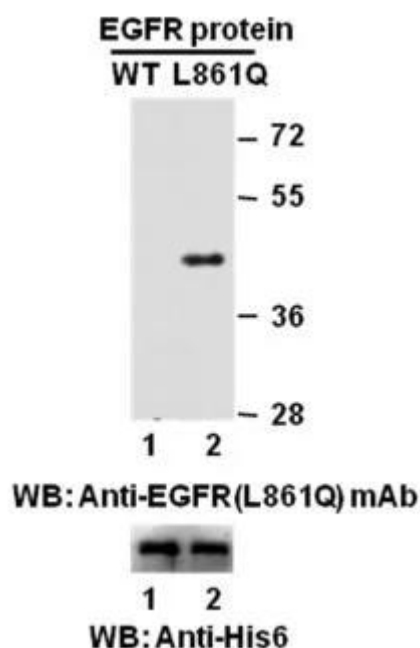
**Preservative:** No

成分: PBS (without  $Mg^{2+}$  and  $Ca^{2+}$ ), pH 7.4, 150 mM NaCl, 50% glycerol

种属反应性: Recognizes EGFR(L861Q), but not wild type EGFR from vertebrates.

储存条件:: Store at  $-20^{\circ}C$ . Avoid repeated freezing and thawing.

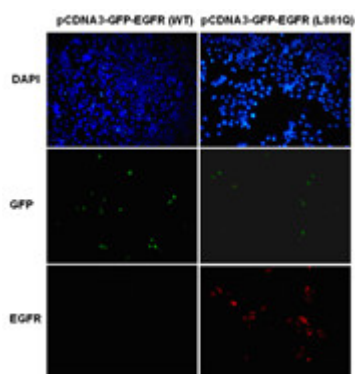
**Western blot:**



## Western blot analysis of recombinant EGFR(L861Q) and wild type proteins.

Purified His-tagged EGFR(L861Q) protein (amino acids 702-987, lane 2, 货号 10211) and corresponding wild type protein (lane 1, 货号 10210) were blotted with EGFR(L861Q) mouse monoclonal antibody (货号 26077). Proteins loading (bottom) were blotted with His-tag monoclonal antibody (货号28004).

## Immunofluorescence:



## Immunofluorescence of cells expressing EGFR proteins with EGFR(L861Q) antibody.

HEK293T cells were transfected with pCDNA3-GFP-EGFR (WT) plasmid (left column) or pCDNA3-GFP-EGFR(L861Q) plasmid (right column), then fixed and stained with EGFR(L861Q) monoclonal antibody (货号26077).

