

## EGFR(L858R)

### EGFR(L858R)

**Cat. #:** 26082

**Gene Symbol:** EGFR/HER1/ERBB1

**Description:** Anti-EGFR(L858R) Mouse Monoclonal Antibody

**Background:** EGFR is a receptor tyrosine kinase binding ligands of the EGF family and activating several signaling cascades to convert extracellular cues into appropriate cellular responses. It activates at least 4 major downstream signaling cascades including the RAS-RAF-MEK-ERK, PI3 kinase-AKT, PLC gamma-PKC and STATs modules. Defects in EGFR are associated with lung cancer (LNCR).

**Immunogen:** A synthetic peptide from the internal region of EGFR which includes the mutation of L858R, human origin.

**Applications:** ELISA, WB, IF, IHC

**Recommended Dilutions:**

ELISA: 1:1000-1:5000

WB: 1:1000-1:5000

IHC: 1:50-1:100

**Concentration:** 1 mg/ml

**Host Species:** Mouse

**Format:** Liquid

**Clonality:** Monoclonal

**Isotype:** IgG1

**Purity:** Purified from ascites

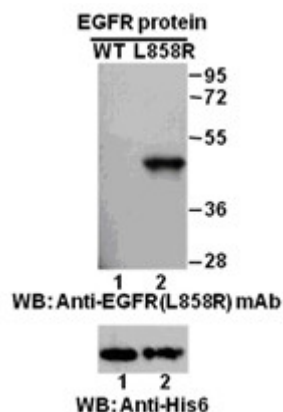
**Preservative:** No

**Constituents:** PBS (without Mg<sup>2+</sup> and Ca<sup>2+</sup>), pH 7.4, 150 mM NaCl, 50% glycerol

**Species Reactivity:** Recognizes EGFR(L858R), but not wild type EGFR from vertebrates.

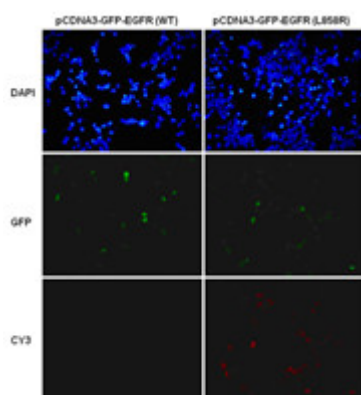
**Storage Conditions:** Store at -20°C. Avoid repeated freezing and thawing.

### Western blot:



Western blot analysis of recombinant EGFR(L858R) and wild type proteins. Purified His-tagged EGFR(L858R) protein (amino acid 702-987, lane 2, Cat. # 10230) and corresponding wild type protein (amino acid 702-987, lane 1, Cat. # 10210) were blotted with anti EGFR(L858R) mouse monoclonal antibody (Cat. # 26082) . Proteins loading (bottom) were blotted with anti-His-tag monoclonal antibody (Cat. # 28004).

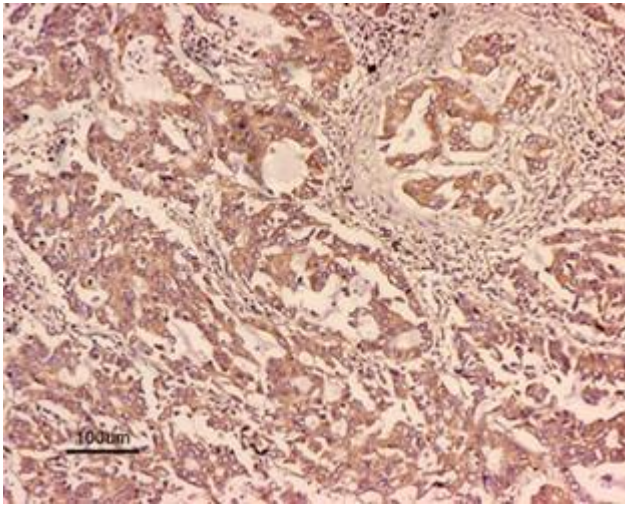
## Immunofluorescence:



## Immunofluorescence of cells expressing EGFR proteins with anti EGFR(L858R) antibody.

HEK293T cells were transfected with pCDNA3-GFP-EGFR (WT) plasmid (left column) or pCDNA3-GFP-EGFR L858R) plasmid (right column), then fixed and stained with anti- EGFR(L858R) monoclonal antibody (Cat. # 26082).

## Immunohistochemistry:



**Immunohistochemical analysis of paraffin-embedded human NSCLC tissue with anti-EGFR(L858R) monoclonal antibody (Cat. #26082).**

Tissue samples were fixed with formaldehyde and blocked with 1% serum for 15 min at 37 °C. Antigen retrieval was by heat mediation in citrate buffer (pH6). Samples were then incubated with primary antibody (1:400) overnight at 4°C. A HRP-conjugated Goat anti-mouse IgG (dilution 1:100) was used as secondary antibody.