

## EGFR(G863D)

### EGFR(G863D)

**Cat. #:** 26119

**Gene Symbol:** EGFR/HER1/ERBB1

**Description:** Anti-EGFR(G863D) Mouse Monoclonal Antibody

**Background:** EGFR is a receptor tyrosine kinase binding ligands of the EGF family and activating several signaling cascades to convert extracellular cues into appropriate cellular responses. It activates at least 4 major downstream signaling cascades including the RAS-RAF-MEK-ERK, PI3 kinase-AKT, PLC gamma-PKC and STATs modules. Defects in EGFR are associated with lung cancer (LNCR).

**Immunogen:** A synthetic peptide from the internal region of EGFR which includes the mutation of G863D, human origin.

**Tested Applications:** ELISA, WB, IF, IHC

**Recommended Dilutions:**

ELISA: 1:1000-1:5000

WB: 1:1000-1:5000

IHC: 1:50-1:100

**Concentration:** 1 mg/ml

**Host Species:** Mouse

**Format:** Liquid

**Clonality:** Monoclonal

**Isotype:**

**Purity:** Purified from ascites

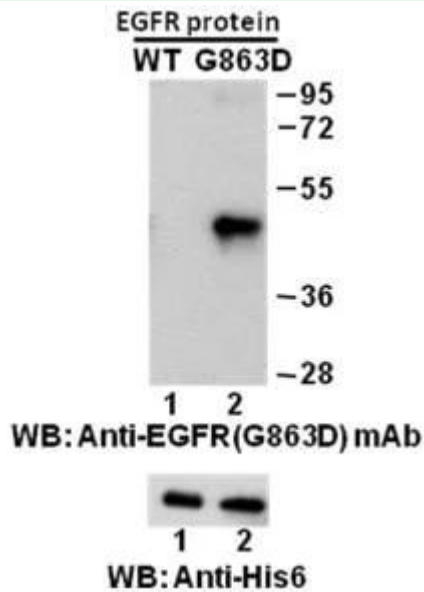
**Preservative:** No

**Constituents:** PBS (without Mg<sup>2+</sup> and Ca<sup>2+</sup>), pH 7.4, 150 mM NaCl, 50% glycerol

**Species Reactivity:** Recognizes EGFR(G863D), but not wild type EGFR from vertebrates.

**Storage Conditions:** Store at -20°C. Avoid repeated freezing and thawing.

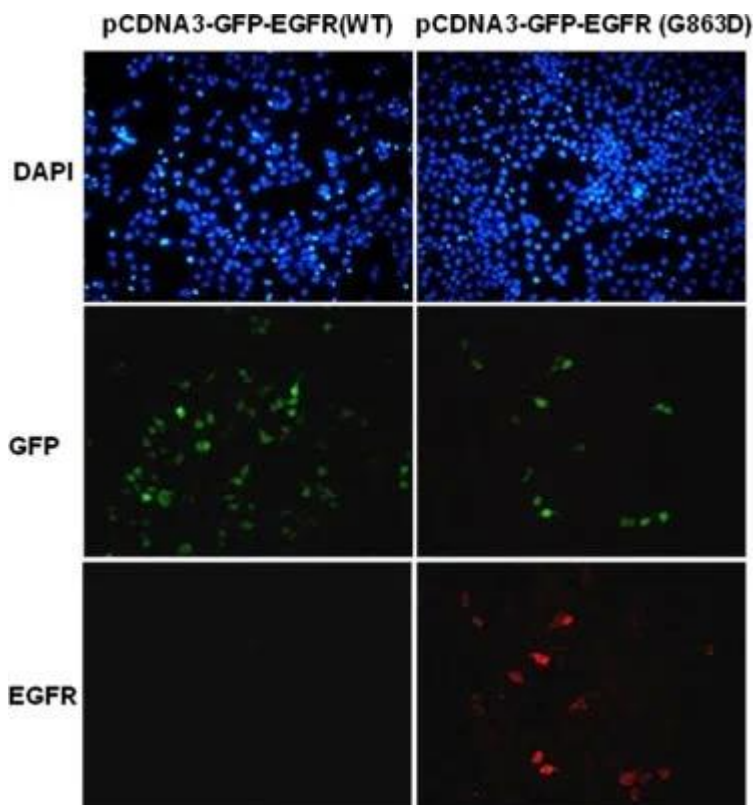
### Western blot:



## Western blot analysis of recombinant EGFR(G863D) and wild type proteins.

Purified His-tagged EGFR(G863D) protein (amino acid 702-987) (Cat. #10222) and corresponding wild type protein (Cat. #10210) were blotted with anti-EGFR(G863D) mouse monoclonal antibody (Cat. #26119). Proteins loading were blotted with anti-His-tag monoclonal antibody (Cat. #28004).

## Immunofluorescence:



**antibody.**

HEK293T cells were transfected with pCDNA3-GFP-EGFR (WT) plasmid (left column) or pCDNA3-GFP-EGFR(G863D) plasmid (right column), then fixed and stained with anti-EGFR(G863D) monoclonal antibody (Cat. #26119).