

EGFR (L747-P753)S

EGFR (L747-P753)S

Cat. #: 26287

Gene Symbol: EGFR/HER1/ERBB1

Description: Anti-EGFR(L747-P753)S Mouse Monoclonal Antibody

Background: EGFR is a receptor tyrosine kinase binding ligands of the EGF family and activating several signaling cascades to convert extracellular cues into appropriate cellular responses. It activates at least 4 major downstream signaling cascades including the RAS-RAF-MEK-ERK, PI3 kinase-AKT, PLCgamma-PKC and STATs modules. Defects in EGFR are associated with lung cancer (LNCR).

Immunogen: A synthetic peptide from the internal region of EGFR which includes the mutation of (L747-P753) S, human origin.

Applications: ELISA, WB, IF, IHC

Recommended Dilutions:

ELISA: 1:1000-1:5000

WB: 1:500-1:1000

IHC: 1:50-1:100

Concentration: 1 mg/ml

Host Species: Mouse

Format: Liquid

Clonality: Monoclonal

Isotype:

Purity: Purified from ascites

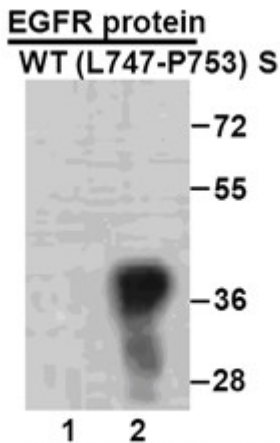
Preservative: No

Constituents: PBS (without Mg²⁺ and Ca²⁺), pH 7.4, 150 mM NaCl, 50% glycerol

Species Reactivity: Recognizes EGFR(L747-P753)S, but not wild type EGFR protein from vertebrates.

Storage Conditions: Store at -20°C. Avoid repeated freezing and thawing

Western blot:

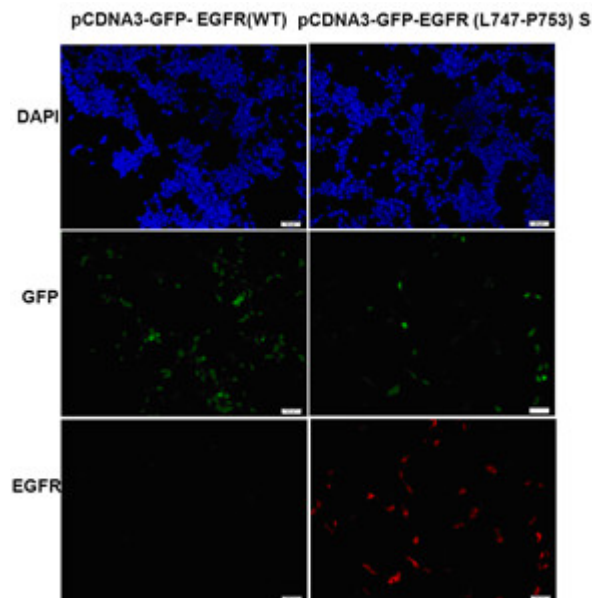


WB: Anti- EGFR (L747-P753) S mAb

Western blot analysis of recombinant EGFR(L747-P753) S and wild type proteins.

Purified His-tagged EGFR(L747-P753)S protein (702-987) and wild type protein (702-987) were blotted with anti- EGFR(L747-P753)S mouse antibody (Cat. #26287).

Immunofluorescence:



Immunofluorescence of cells expressing EGFR proteins with anti-EGFR(L747-P753)S antibody.

HEK293T cells were transfected with pCDNA3-GFP-EGFR (WT) plasmid (left column) or pCDNA3-GFP-EGFR(L747-P753)S plasmid (right column), then fixed and stained with anti- EGFR(L747-P753)S monoclonal antibody (Cat. #26287).



Product Description

Pioneering GTPase and Oncogene Product Development since 2010
