

EGFR (DM129) RABBIT MAB

目录: 28474

产品名称: EGFR(DM129) Rabbit Monoclonal Antibody

基因符号: EGFR;ERBB;ERBB1;HER1;PIG61;mENA

描述: EGFR antibody(DM129) Rabbit Monoclonal Antibody

背景: The protein encoded by this gene is a transmembrane glycoprotein that is a member of the protein kinase superfamily. This protein is a receptor for members of the epidermal growth factor family. EGFR is a cell surface protein that binds to epidermal growth factor. Binding of the protein to a ligand induces receptor dimerization and tyrosine autophosphorylation and leads to cell proliferation. Mutations in this gene are associated with lung cancer.

经过测试的应用: ELISA; Flow Cyt

推荐稀释度: ELISA 1:5000-10000; Flow Cyt 1:100

种属反应性: Rabbit

亚型: Rabbit IgG

纯化: Purified from cell culture supernatant by affinity chromatography

种属反应性: Human EGFR

成分: Lyophilized from sterile PBS, pH 7.4. 5 % - 8 % trehalose is added as protectants before lyophilization.

储存和运输: Store at -20°C to -80°C for 12 months in lyophilized form. After reconstitution, if not intended for use within a month, aliquot and store at -80°C (Avoid repeated freezing and thawing).

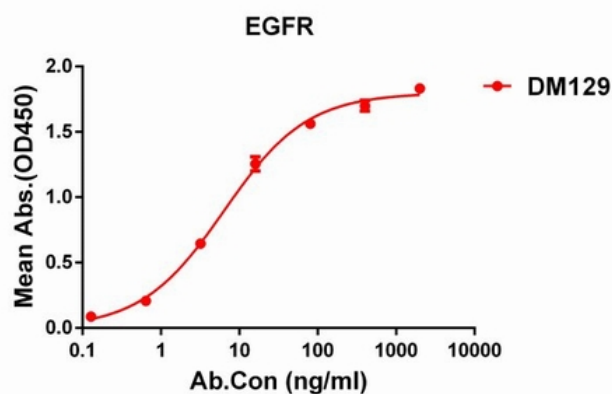


Figure 1. ELISA plate pre-coated by 1 µg/ml (100 µl/well) Human EGFR protein, His tagged protein 11218 can bind Rabbit EGFR monoclonal antibody (clone: DM129) in a linear range of 0.1-18 ng/ml.

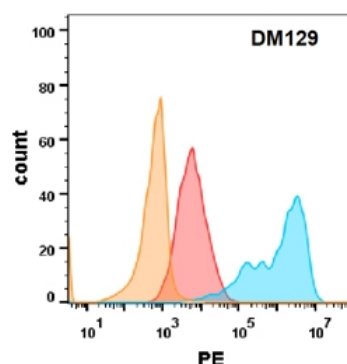


Figure 2. EGFR protein is highly expressed on the surface of Expi293 cell membrane. Flow cytometry analysis with EGFR (DM129) on Expi293 cells transfected with human EGFR (Blue histogram) or Expi293 transfected with irrelevant protein (Red histogram), and Isotype antibody on Expi293 transfected with irrelevant protein (Orange histogram).