

EDA (DMC388) IGG1 CHIMERIC MAB

目录: 28206

产品名称: EDA(DMC388) IgG1 Chimeric Monoclonal Antibody

基因符号: ED1; EDA2

描述: EDA antibody(DMC388) IgG1 Chimeric Monoclonal Antibody

背景: The protein encoded by this gene is a type II membrane protein that can be cleaved by furin to produce a secreted form. The encoded protein; which belongs to the tumor necrosis factor family; acts as a homotrimer and may be involved in cell-cell signaling during the development of ectodermal organs. Defects in this gene are a cause of ectodermal dysplasia; anhidrotic; which is also known as X-linked hypohidrotic ectodermal dysplasia. Several transcript variants encoding many different isoforms have been found for this gene.

经过测试的应用: Flow Cyt

推荐稀释度: Flow Cyt 1:100

种属反应性: Rabbit

亚型: Rabbit:Human Fc chimeric IgG1

纯化: Purified from cell culture supernatant by affinity chromatography

种属反应性: Human EDA

成分: Lyophilized from sterile PBS, pH 7.4. 5 % – 8% trehalose is added as protectants before lyophilization.

储存和运输: Store at -20°C to -80°C for 12 months in lyophilized form.

After reconstitution, if not intended for use within a month, aliquot and store at -80°C (Avoid repeated freezing and thawing).

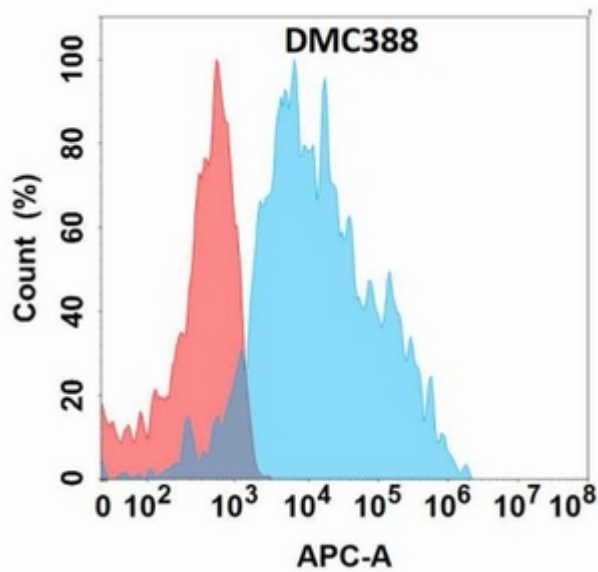


Figure 1. Flow cytometry analysis with EDA (DMC388) on Expi293 cells transfected with human EDA (Blue histogram) or Expi293 transfected with irrelevant protein (Red histogram).