

## PDL1 MAB (DURVALUMAB)

**Cat.#:** 28145

**Product Name:** Anti-PDL1 (Durvalumab) Monoclonal Antibody

**Synonyms:** PD-L1;CD274;B7-H1;PDCD1L1;PDCD1LG1

**Description:** Anti-PDL1 (durvalumab) Monoclonal Antibody

**Background:** Research grade biosimilar. Not for use in therapeutic or diagnostic procedures for humans or animals.

**Applications:** Flow Cyt

**Recommended Dilutions:** Flow Cyt 1:100

**Host Species:** Humanized

**Isotype:** IgG1(K97R, L117F, L118E, P214S)

**Purification:** Purified from cell culture supernatant by affinity chromatography

**Species Reactivity:** Human PDL1

**Constituents:** Lyophilized from sterile PBS, pH 7.4. 5% – 8% trehalose is added as protectants before lyophilization.

**Storage & Shipping:** Store at  $-20^{\circ}\text{C}$  to  $-80^{\circ}\text{C}$  for 12 months in lyophilized form. After reconstitution, if not intended for use within a month, aliquot and store at  $-80^{\circ}\text{C}$  (Avoid repeated freezing and thawing).

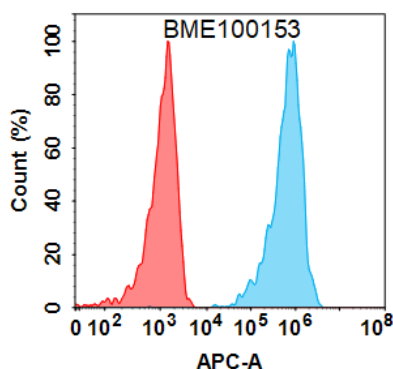


Figure 1. Flow cytometry analysis with  $1\ \mu\text{g}/\text{mL}$  Anti-PDL1(durvalumab biosimilar) mAb (28145) on Expi293 cells transfected with Human PDL1 protein (Blue histogram) or Expi293 transfected with irrelevant protein (Red histogram).

### Anti-PDL1 (durvalumab biosimilar) mAb ELISA

0.2  $\mu\text{g}$  of Human PDL1, mFc-His tagged protein per well

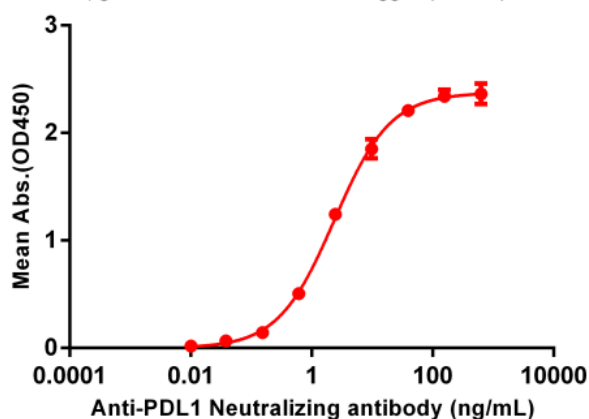


Figure 2. ELISA plate pre-coated by  $2\ \mu\text{g}/\text{ml}$  ( $100\ \mu\text{l}/\text{well}$ ) Human PDL1, mFc-His tagged protein 11151 can bind Anti-PDL1 (durvalumab biosimilar) Neutralizing antibody (28145) in a linear range of 0.61–9.77 ng/ml.