

## DKK1 (DM210) RABBIT MAB

**Cat.#:** 28553

**Product Name:** Anti-DKK1(DM210) Rabbit Monoclonal Antibody

**Synonyms:** DKK-1; SK

**Description:** Anti-DKK1 antibody(DM210) Rabbit Monoclonal Antibody

**Background:** This gene encodes a member of the dickkopf family of proteins. Members of this family are secreted proteins characterized by two cysteine-rich domains that mediate protein-protein interactions. The encoded protein binds to the LRP6 co-receptor and inhibits beta-catenin-dependent Wnt signaling. This gene plays a role in embryonic development and may be important in bone formation in adults. Elevated expression of this gene has been observed in numerous human cancers and this protein may promote proliferation; invasion and growth in cancer cell lines.

**Applications:** ELISA; Flow Cyt

**Recommended Dilutions:** ELISA 1:5000-10000; Flow Cyt 1:100

**Host Species:** Rabbit

**Isotype:** Rabbit IgG

**Purification:** Purified from cell culture supernatant by affinity chromatography

**Species Reactivity:** Human DKK1

**Constituents:** Lyophilized from sterile PBS, pH 7.4. 5 % - 8% trehalose is added as protectants before lyophilization.

**Storage & Shipping:** Store at -20°C to -80°C for 12 months in lyophilized form. After reconstitution, if not intended for use within a month, aliquot and store at -80°C (Avoid repeated freezing and thawing).

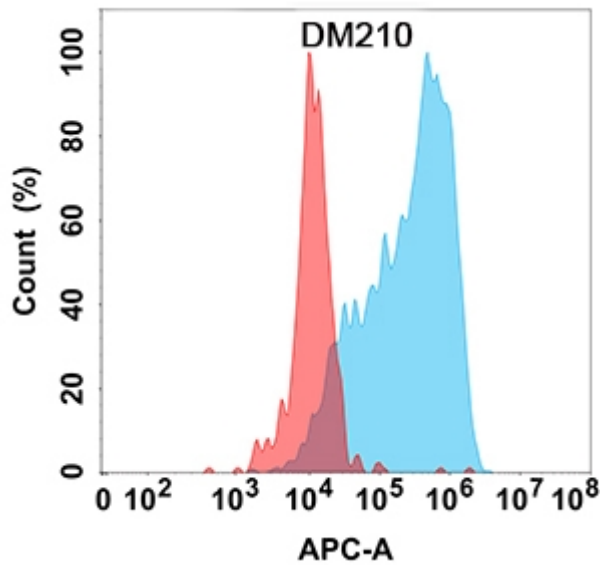


Figure 1. Flow cytometry analysis with Anti-DKK1 (DM210) on Expi293 cells transfected with human DKK1 (Blue histogram) or Expi293 transfected with irrelevant protein (Red histogram).