

## CYNOMOLGUS SELPLG PROTEIN, HIS TAG

**Cat.#:** 12122

**Product Name:** Cynomolgus SELPLG Protein

**Size:** 10 µg, 50 µg and 100 µg

**Synonyms:** PSGL-1;SGLI;DI62;electin P ligand

**Target:** SELPLG

**UNIPROT ID:** A0A7N9CVJ8

**Description:** Recombinant Cynomolgus SELPLG protein with C-terminal 6xHis tag

**Background:** This gene encodes a glycoprotein that functions as a high affinity counter-receptor for the cell adhesion molecules P-, E- and L-selectin expressed on myeloid cells and stimulated T lymphocytes. As such, this protein plays a critical role in leukocyte trafficking during inflammation by tethering of leukocytes to activated platelets or endothelia expressing selectins. This protein requires two post-translational modifications, tyrosine sulfation and the addition of the sialyl Lewis x tetrasaccharide (sLex) to its O-linked glycans, for its high-affinity binding activity. Aberrant expression of this gene and polymorphisms in this gene are associated with defects in the innate and adaptive immune response. Alternate splicing results in multiple transcript variants.

**Species/Host:** HEK293

**Molecular Weight:** The protein has a predicted molecular mass of 34.3 kDa after removal of the signal peptide.

**Molecular Characterization:** SELPLG(Leu34-Cys356) 6xHis tag

**Purity:** The purity of the protein is greater than 85% as determined by SDS-PAGE and Coomassie blue staining.

**Formulation & Reconstitution:** Lyophilized from nanodisc solubilization buffer (20 mM Tris-HCl, 150 mM NaCl, pH 8.0). Normally 5% – 8% trehalose is added as protectants before lyophilization.

**Storage & Shipping:** Store at -20°C to -80°C for 12 months in lyophilized form. After reconstitution, if not intended for use within a month, aliquot and store at -80°C (Avoid repeated freezing and thawing). Lyophilized proteins are shipped at ambient temperature.

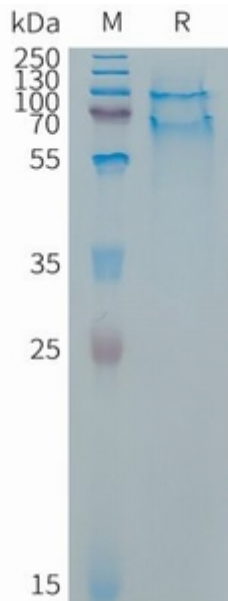


Figure 1. Cynomolgus SELPLG Protein, His Tag on SDS-PAGE under reducing condition.