

CXCR4 (DMC680) IGG1 CHIMERIC MAB

目录: 28278

产品名称: CXCR4(DMC680) IgG1 Chimeric Monoclonal Antibody

基因符号: CD184; D2S201E; FB22; HM89; HSY3RR; LAP-3; LAP3; LCRI; LESTR; NPY3R; NPYR; NPYRL; NPYY3R; WHIM; WHIMS

描述: CXCR4 antibody(DMC680) IgG1 Chimeric Monoclonal Antibody

背景: This gene encodes a CXC chemokine receptor specific for stromal cell-derived factor-1. The protein has 7 transmembrane regions and is located on the cell surface. It acts with the CD4 protein to support HIV entry into cells and is also highly expressed in breast cancer cells. Mutations in this gene have been associated with WHIM (warts; hypogammaglobulinemia; infections; and myelokathexis) syndrome. Alternate transcriptional splice variants; encoding different isoforms; have been characterized. [provided by RefSeq; Jul 2008]

经过测试的应用: Flow Cyt

推荐稀释度: Flow Cyt 1:100

种属反应性: Rabbit

亚型: Rabbit:Human Fc chimeric IgG1

纯化: Purified from cell culture supernatant by affinity chromatography

种属反应性: Human CXCR4

成分: Lyophilized from sterile PBS, pH 7.4. 5 % – 8% trehalose is added as protectants before lyophilization.

储存和运输: Store at -20°C to -80°C for 12 months in lyophilized form. After reconstitution, if not intended for use within a month, aliquot and store at -80°C (Avoid repeated freezing and thawing).

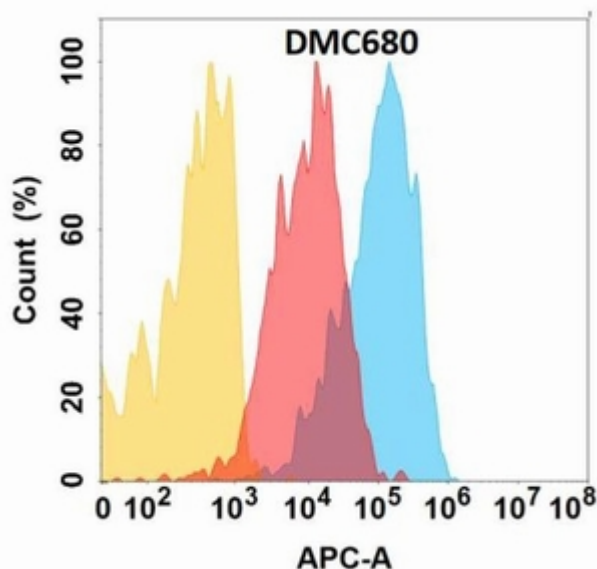


Figure 1. CXCR4 protein is expressed on the surface of Expi293 cell membrane. Flow cytometry analysis with CXCR4 (DMC680) on Expi293 cells transfected with human CXCR4 (Blue histogram) or Expi293 transfected with irrelevant protein (Red histogram), and Isotype antibody on Expi293 transfected with irrelevant protein (Orange histogram).