

CTCF(R339W)

CTCF(R339W)

Cat. #: 26326

Gene Symbol: CTCF; MRD21

Description: Anti-CTCF(R339W) Mouse Monoclonal Antibody

Background: Transcriptional repressor CTCF also known as 11-zinc finger protein or CCCTC-binding factor is a transcription factor that in humans is encoded by the CTCF gene. CTCF is involved in many cellular processes, including transcriptional regulation, insulator activity, recombination and regulation of chromatin architecture.

Immunogen: A synthetic peptide from the internal region of CTCF which includes the mutation of R339W, human origin.

Applications: ELISA, WB, IHC

Recommended Dilutions:

ELISA: 1:1000-1:5000

WB: 1:500-1:1000

IHC: 1:50-1:100

Concentration: 1 mg/ml

Host Species: Mouse

Format: Liquid

Clonality: Monoclonal

Isotype: IgG

Purity: Purified from ascites

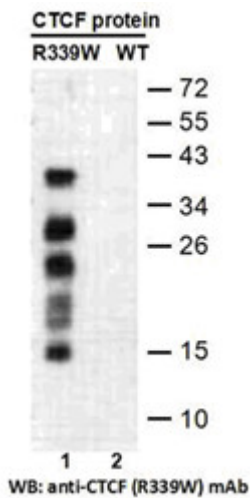
Preservative: No

Constituents: PBS (without Mg²⁺ and Ca²⁺), pH 7.4, 150 mM NaCl, 50% glycerol

Species Reactivity: Recognizes R339W mutant, but not wild type CTCF of vertebrates.

Storage Conditions: Store at -20°C. Avoid repeated freezing and thawing

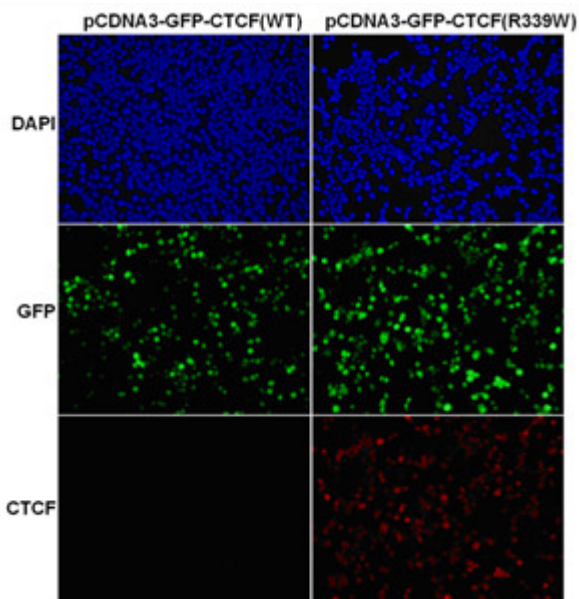
Western blot:



Western blot analysis of recombinant CTCF (R339W) and wild type proteins.

Purified His-tagged CTCF (R339W) protein (lane 1) and corresponding wild type protein (lane 2) were blotted with Anti-CTCF(R339W) monoclonal antibody (Cat. #26326).

Immunofluorescence:



Immunofluorescence of cells expressing CTCF proteins with Anti-CTCF(R339W) antibody.

HEK293T cells were transfected with pCDNA3-GFP-CTCF (WT) plasmid (left column) or pCDNA3-GFP-CTCF (R339W) plasmid (right column), then fixed and stained with Anti-CTCF(R339W) monoclonal antibody (Cat. #26326).